

# Installation Instructions

## qulu / Paxton Plug-in

### Version Control

Version	Published Date	Changes	Author
1.0	20 <sup>th</sup> April 2015		Zoe Yates
1.1	7 <sup>th</sup> July 2015	Net2 Lite Support	Steve Canning
1.2	31 <sup>th</sup> October 2016	Updated adding qulu VMS on new Paxton v5.03	Steve Canning

### Contact Information

Telephone	+ 44 118 912 5000
Email	<a href="mailto:support@visata-cctv.com">support@visata-cctv.com</a>
Internet	<a href="http://www.vista-cctv.com">www.vista-cctv.com</a>

### Document Scope

The purpose of this document is to walk users through how to integrate qulu VMS with Paxton Access Control software. This integration enables video from qulu VMS to be displayed in the event window within the Paxton software screen when an event occurs.

#### Software Requirements:

qulu software required – 2.3.1.8767 or above

Paxton Net2 Pro or Lite - 5.2.2516.5853 or above

.NET 4.5.2 plus latest service pack available from windows updates

Latest qulu Paxton plug-in (Windows only) Plugin version must match qulu version

Plug-in available from [www.vista-cctv.com/product/qulu](http://www.vista-cctv.com/product/qulu)

To setup the system administrator rights for the PC (windows), qulu and Paxton should be available.

# Contents

Installing the Plug-in.....	3
Configuring the Plug-in .....	4
Linking a Camera to a Door.....	8
Viewing Video .....	9
Installation Notes: .....	11

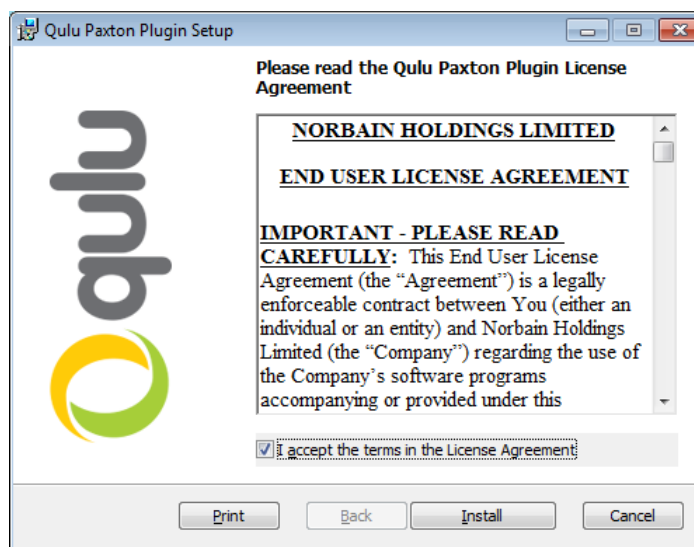
## Installing the Plug-in

The plug-in is installed on the computer running Net2 Pro or Lite software. You will require the plug-in available from [www.vista-cctv.com/product/qulu](http://www.vista-cctv.com/product/qulu).

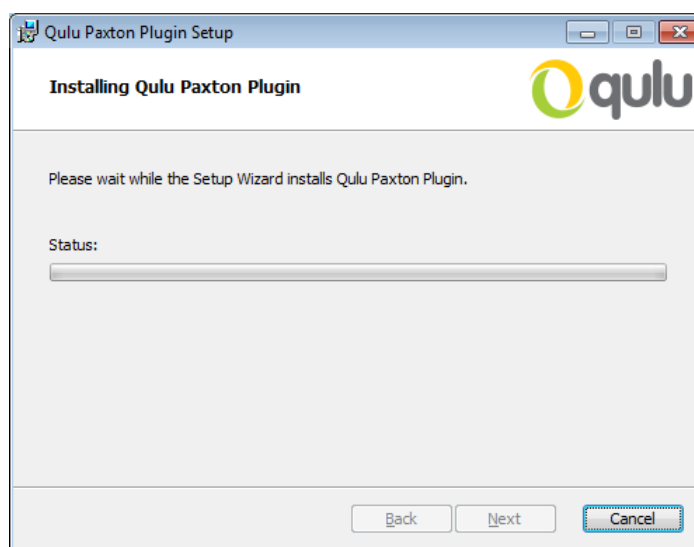


NOTE – Windows Administrator Rights will be required to install the plug-in.

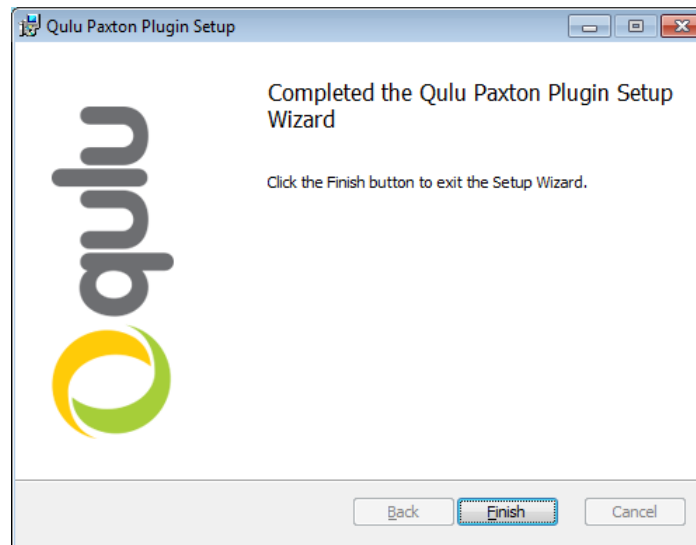
- Double click the installer file to launch the plug-in installer, accept the License Agreement and click **[Install]**



- The plug-in will install.



- Once the installer has completed, click **[Finish]**



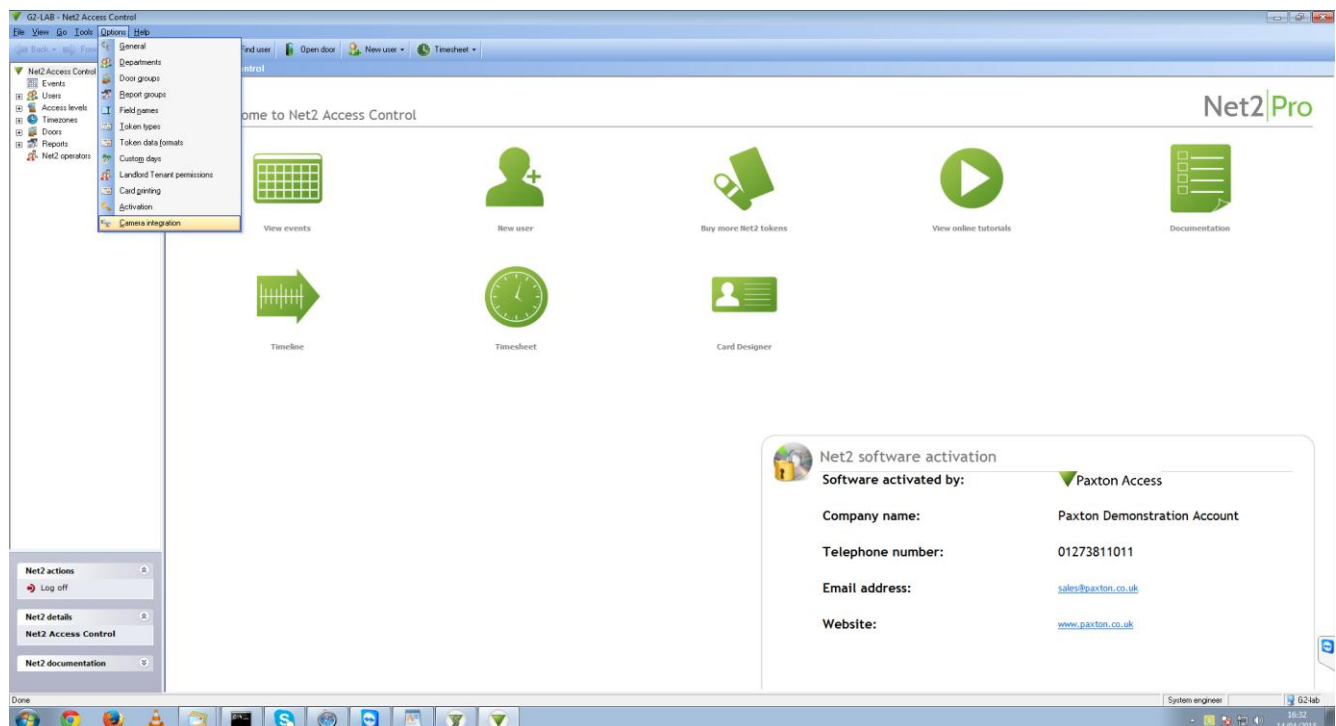
## Configuring the Plug-in

The Paxton Net2 Pro or Lite software with the qulu plug-in installed now needs to be configured.

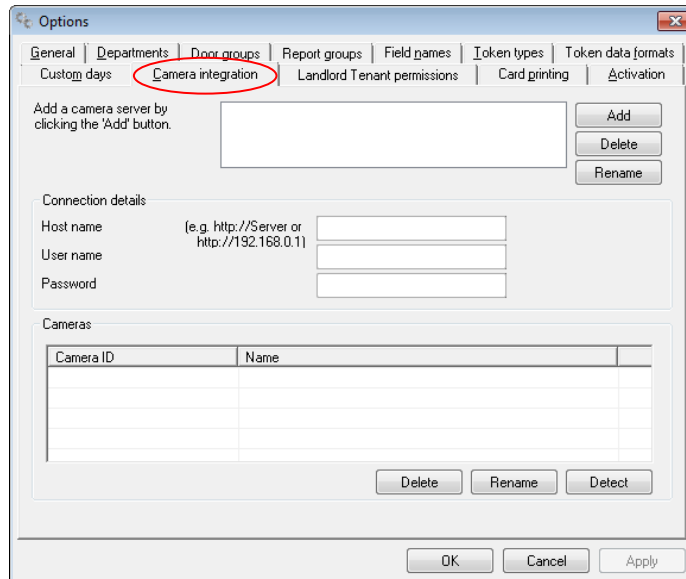


**NOTE** – Paxton Administrator Rights will be required to install the plug-in.

- Login to the Paxton Net2 Pro or Lite software.
- Using the menu option click **[Options]** and **[Camera Integration]**



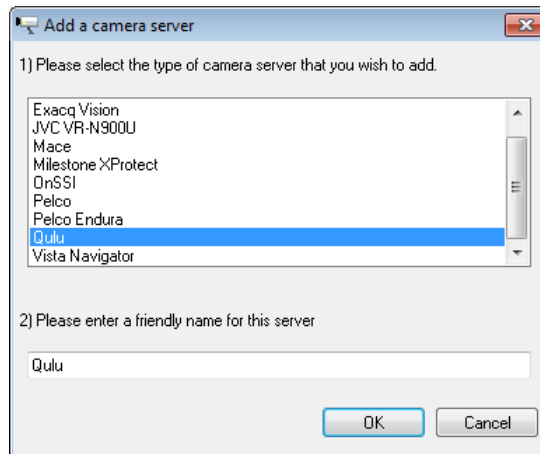
- When the option screen is displayed click **[Camera Integration]** tab



The 'Options' dialog box is shown with the 'Camera integration' tab selected. The 'Add' button is highlighted. Below the 'Add' button is a text input field. The 'Connection details' section contains fields for 'Host name', 'User name', and 'Password'. The 'Cameras' section contains a table with columns 'Camera ID' and 'Name'.

Camera ID	Name

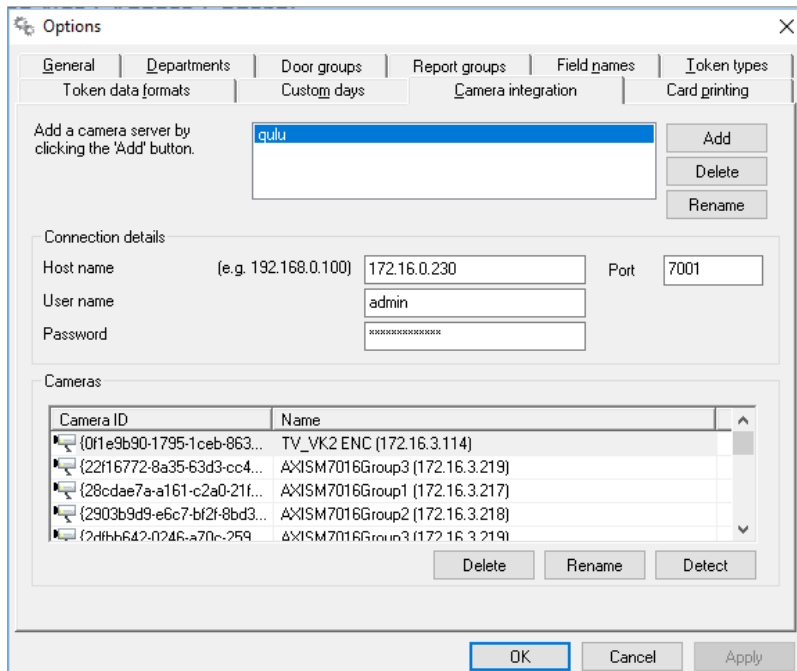
- Click the **[Add]** button to display the list of camera servers, select **[Qulu]** and click **[OK]**.



The 'Add a camera server' dialog box is shown. It contains a list of camera server types. 'Qulu' is selected. Below the list is a text input field for a friendly name, which contains 'Qulu'.

Exacq Vision
JVC VR-N900U
Mace
Milestone XProtect
OnSSI
Pelco
Pelco Endura
<b>Qulu</b>
Vista Navigator

- Enter the following qulu information in to the field provided:
  - Host Name or IP address – [http://{qulu\\_server\\_address}:7001](http://{qulu_server_address}:7001) on Paxton v5.03.4427 no longer require http:// or :7001 (see screenshot below)



Options

General | Departments | Door groups | Report groups | Field names | Token types

Token data formats | Custom days | Camera integration | Card printing

Add a camera server by clicking the 'Add' button.

qulu

Add | Delete | Rename

Connection details

Host name (e.g. 192.168.0.100) 172.16.0.230 Port 7001

User name admin

Password \*\*\*\*\*

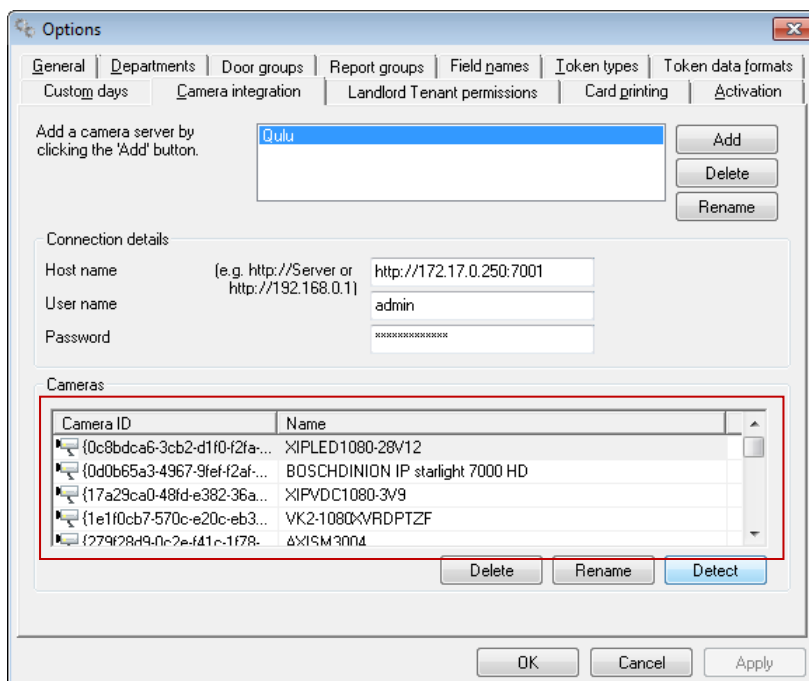
Cameras

Camera ID	Name
{0f1e9b90-1795-1ceb-863...	TV_VK2 ENC (172.16.3.114)
{22f16772-8a35-63d3-cc4...	AXISM7016Group3 (172.16.3.219)
{28cdae7a-a161-c2a0-21f...	AXISM7016Group1 (172.16.3.217)
{2903b9d9-e6c7-bf2f-8bd3...	AXISM7016Group2 (172.16.3.218)
{2d1bb642-f746-a70c-259...	AXISM7016Group3 (172.16.3.219)

Delete | Rename | Detect

OK | Cancel | Apply

- Username – User with rights to see the cameras you wish to be seen in the Paxton software
- Password – Password for chosen user account.
- Click **[Detect]**
- The cameras attached to the server will be listed.



Options

General | Departments | Door groups | Report groups | Field names | Token types | Token data formats

Custom days | Camera integration | Landlord Tenant permissions | Card printing | Activation

Add a camera server by clicking the 'Add' button.

qulu

Add | Delete | Rename

Connection details

Host name (e.g. http://Server or http://192.168.0.1) http://172.17.0.250:7001

User name admin

Password \*\*\*\*\*

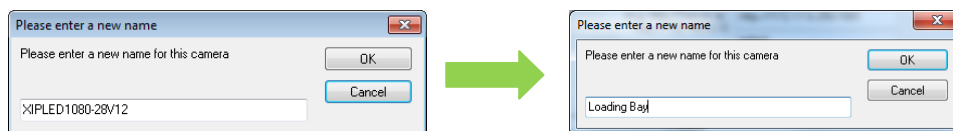
Cameras

Camera ID	Name
{0c8bdca6-3cb2-d1f0-f2fa-...	XIPLED1080-28V12
{0d0b65a3-4967-9fef-f2af-...	BOSCHDINION IP starlight 7000 HD
{17a29ca0-48fd-e382-36a...	XIPVDC1080-3V9
{1e1f0cb7-570c-e20c-eb3...	VK2-1080XVRDPTZF
{279f2a49-0c2e-f41c-1f78...	AXISM7000

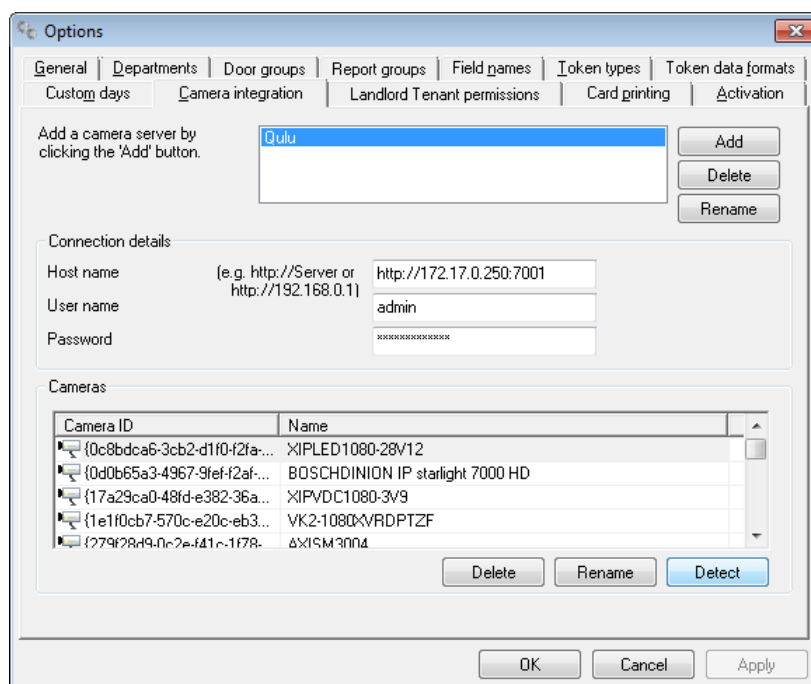
Delete | Rename | Detect

OK | Cancel | Apply

☺ **TIP** – You can rename the camera(s) by clicking on the camera you want to rename and clicking **[Rename]**. Type in the new name and click **[OK]**. (This will change the name within Paxton Net2 only, not within qulu)



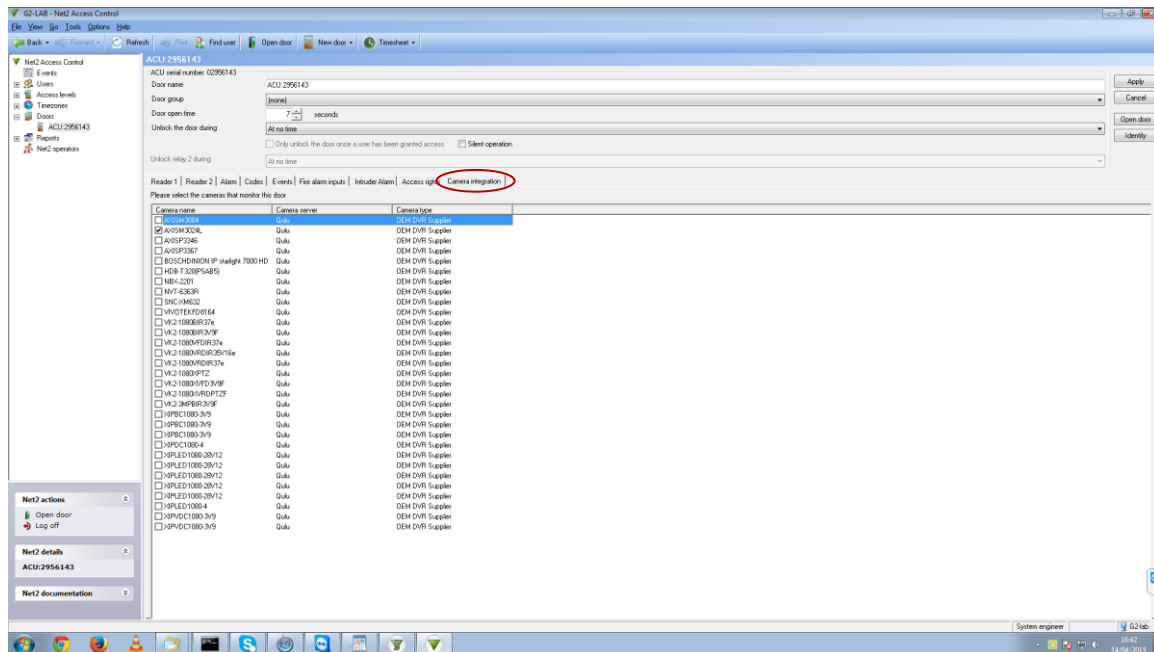
- Click **[Apply]** and **[OK]** to save the camera list.



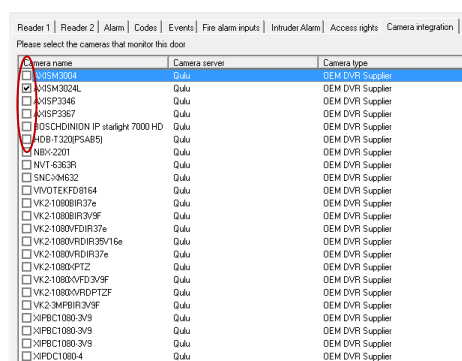
## Linking a Camera to a Door

The qulu cameras now need to link to a specific door.

- Using the menu tree to the left in the Net2 software click **[Doors]** and select a door you would like to link a camera too.
- Click the **[Camera Integration]** tab



- The cameras available to link to the door will be displayed
- Place a tick against the camera(s) you would like to link to a door (multiple cameras can be selected).






- Click **[apply]** to save your settings




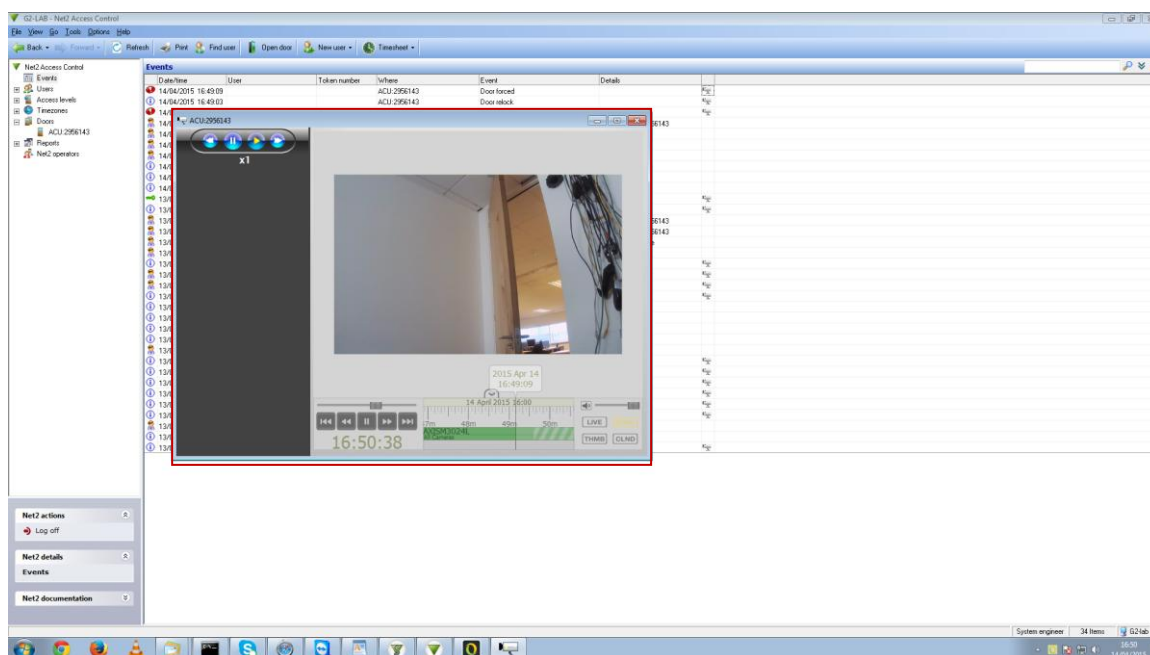
## Viewing Video

If an event is displayed within the Paxton Net2 software it's now possible to view video from that event using within the Paxton Net2 Pro or Lite software.

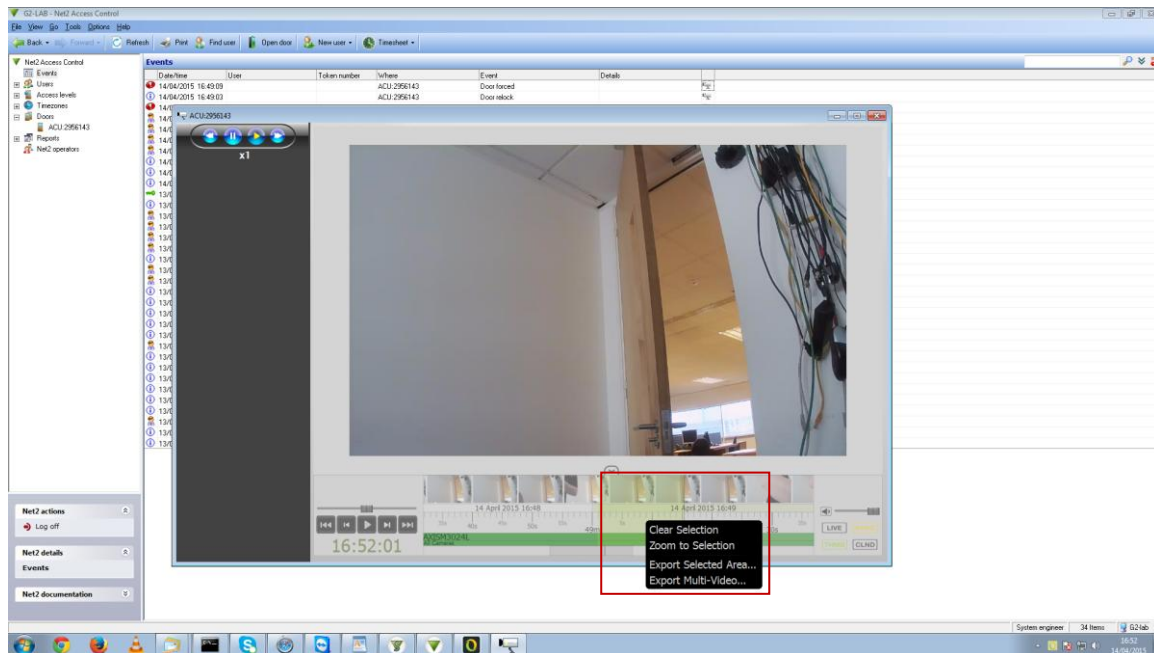
- For doors that have cameras linked to them a camera icon will be displayed next to the event.

Events							
Date/time	User	Token number	Where	Event	Details		
14/04/2015 16:45:16			ACU:2956143	Door forced			
14/04/2015 16:42:55	System engineer			ACU configuration	Modified: ACU:2956143		
14/04/2015 16:37:38	System engineer			Operator	Logon		
14/04/2015 16:37:31	System engineer			Operator	Logoff		
14/04/2015 16:32:21	System engineer			Operator	Logon		
14/04/2015 16:31:53				Server	Started		
14/04/2015 03:02:20				Server	Stopped		
14/04/2015 02:00:42				Backup succeeded			
13/04/2015 17:01:59	Yates, Zoe		ACU:2956143 (In)	Access permitted - PIN only			
13/04/2015 17:01:58			ACU:2956143 (In)	Keypad detected			

- To view video from the event simply double click the camera  icon
- Video from the event will load in a separate window



- To export video right click on the time and drag to the right to define the area you want to export, then select the export type you require.



☺ TIP – We’ve embedded the standard qulu GUI so it’s possible to use a number of the qulu features directly through the Paxton Net2 software. Please refer to the qulu manual for further information on using qulu.

## Installation Notes:

Installation Date	
Engineers Name	
Integrator Business Name	

qulu software version		
qulu user information		
qulu server address		
Paxton Software Version		
Paxton User Information		
Additional Notes		