



VIPER: How to Add Hikvision Cameras

The following Procedure explains how to add a Hikvision IP camera [Default Setting] to a VIPER NVR

Note

All Hikvision cameras need to be activated via SDAP software. Once this is done a password can be set up on the camera. {see camera instructions}

Cameras are set to IP Address 192.168.1.64 by Default

<input checked="" type="checkbox"/>	003	DS-2CD2742FWD-IS	Active	172.16.0.153	8000	V5.4.5build 1701...	172.16.0.1	80	DS-2CD2742FWD-IS20160...
-------------------------------------	-----	------------------	--------	--------------	------	---------------------	------------	----	--------------------------

A seperate PC running SDAP software {Discovery Application} & POE switch will be needed to do the initial set up of the camera.

Default password on VIPER [admin/admin]

How to Activate Camera

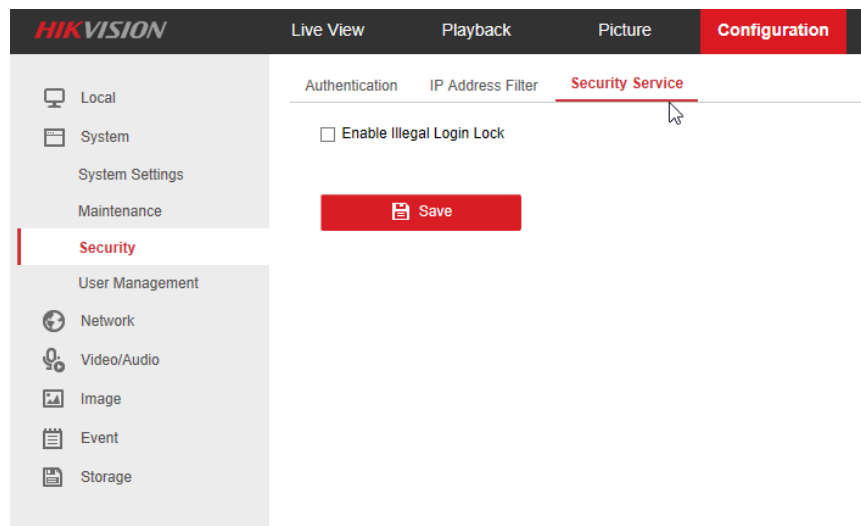
Once Camera is activated you will be able to login into the cameras web interface.

- Go to Network > Basic Settings > TCP/IP set to DHCP

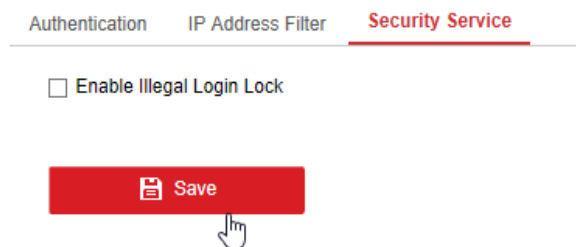
The screenshot shows the Hikvision web interface with the 'Configuration' tab selected. Under 'Network', 'Basic Settings' is chosen, and 'TCP/IP' is the active sub-tab. The configuration fields are as follows:

NIC Type	Auto	
	<input checked="" type="checkbox"/> DHCP	
IPv4 Address	172.16.0.153	Test
IPv4 Subnet Mask	255.255.0.0	
IPv4 Default Gateway	172.16.0.1	
IPv6 Mode	Route Advertisement	View Route Advertisement
IPv6 Address		
IPv6 Subnet Mask		
IPv6 Default Gateway	...	

- Go to System > Security > Security Service



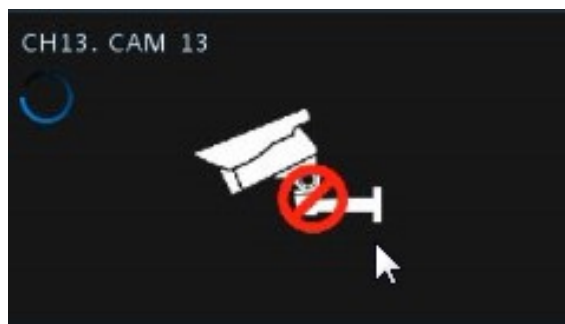
- Untick "Enable Illegal Login Lock" click Save



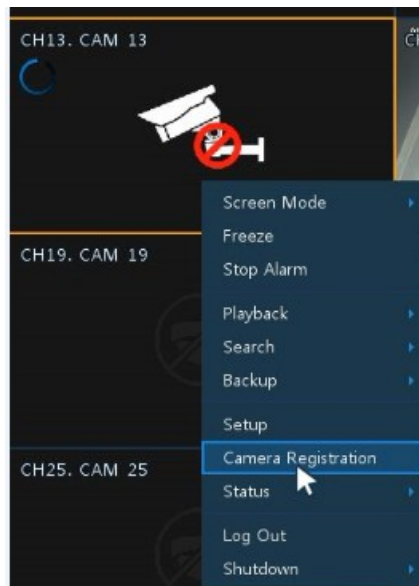
Once the above is completed connect the Camera to a free POE port on the VIPER

How to Connect Camera

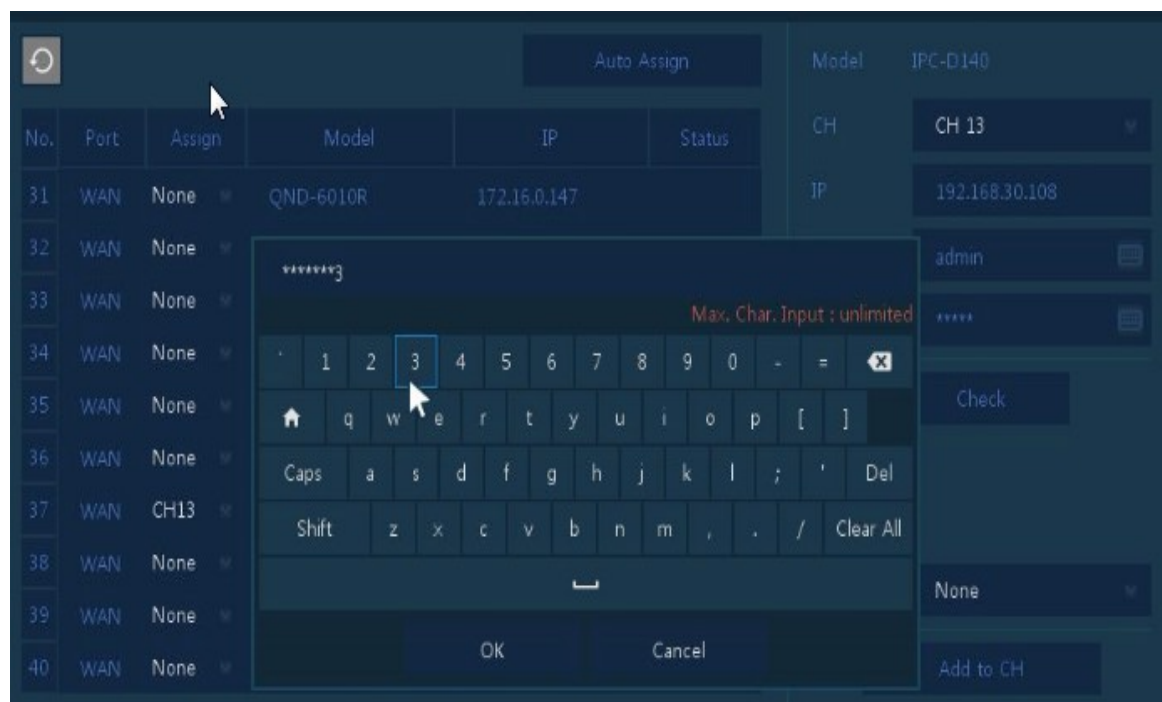
- When the camera is connected the below is displayed



- Right click the on the camera window and select Camera Registration



- List of cameras discovered is displayed
- Select required camera
- Assign Channel
- Enter camera login details User/Password



- Click check if details are correct the camera will show connected

The screenshot shows the 'Camera Registration' window. It features a table with columns: No., Port, Assign, Model, IP, and Status. The table lists 10 cameras, with the 10th camera (No. 50) having a status of 'Changed'. To the right of the table, there are configuration fields for 'Model' (IPC-D140), 'CH' (CH 13), 'IP' (192.168.30.108), 'ID' (admin), and 'Password' (masked). A 'Check' button is highlighted with a red box. Below these fields is an 'Add Manually' section with a 'CH' dropdown set to 'None' and an 'Add to CH' button. At the bottom of the window are 'Apply' and 'Cancel' buttons.

No.	Port	Assign	Model	IP	Status
41	WAN	None	SND-7084	172.16.0.188	
42	WAN	None	QND-6010R	172.16.0.147	
43	WAN	None	SNF-8010	172.16.0.170	
44	WAN	None	SND-6083	172.16.0.185	
45	WAN	None	XND-6080R	172.16.0.155	
46	WAN	None	SNV-L6083R	172.16.0.180	
47	WAN	None	M7016	172.16.3.219	
48	WAN	None	XIPVDC1080-3V9	172.16.1.61	
49	WAN	CH13	IPC-D140	192.168.30.108	Changed
50	WAN	None	M7016	172.16.3.218	

Click Apply



- Exit Menu and check the camera is displayed

End of procedure