

# VIPER: How to add Axis cameras

Modified on: Fri, 25 May, 2018 at 10:09 AM



The following Procedure explains how to add Axis IP cameras to a VIPER NVR

*Note.*

*A separate PC running Axis IP Finder {Discovery Application} & POE switch will be needed to do the initial set up of the camera.*

## Method 1 [Using Direct connection to the VIPER]

Login in to cameras Web Interface using Administrator User/Password [Latest Axis FW is only supported via Chrome or Firefox]

Check camera is set to DHCP

### TCP/IP

The screenshot shows a 'TCP/IP' configuration window. Under the 'IPv4' section, there is a dropdown menu currently set to 'Automatic IP (DHCP) and DNS (DHCP)'. A mouse cursor is pointing at the dropdown. At the bottom right of the window is a blue 'Save' button.

Check Camera is set to get Time via DHCP  
Set Time Zone.

## Date and time

Automatic date and time ☒

Year: 2017 Month: 05 Day: 06

Hour: 04 Min: 55

Connect to NTP-server

☒ Automatically (DHCP)

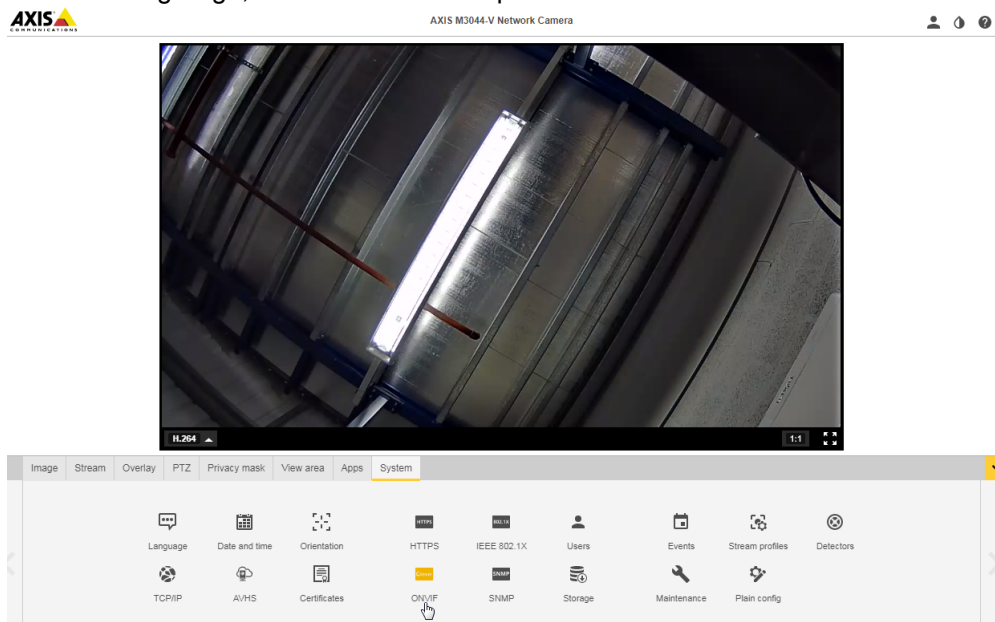
☐ Manually

Time zone

GMT (Dublin, Lisbon, London, Reykjavik)

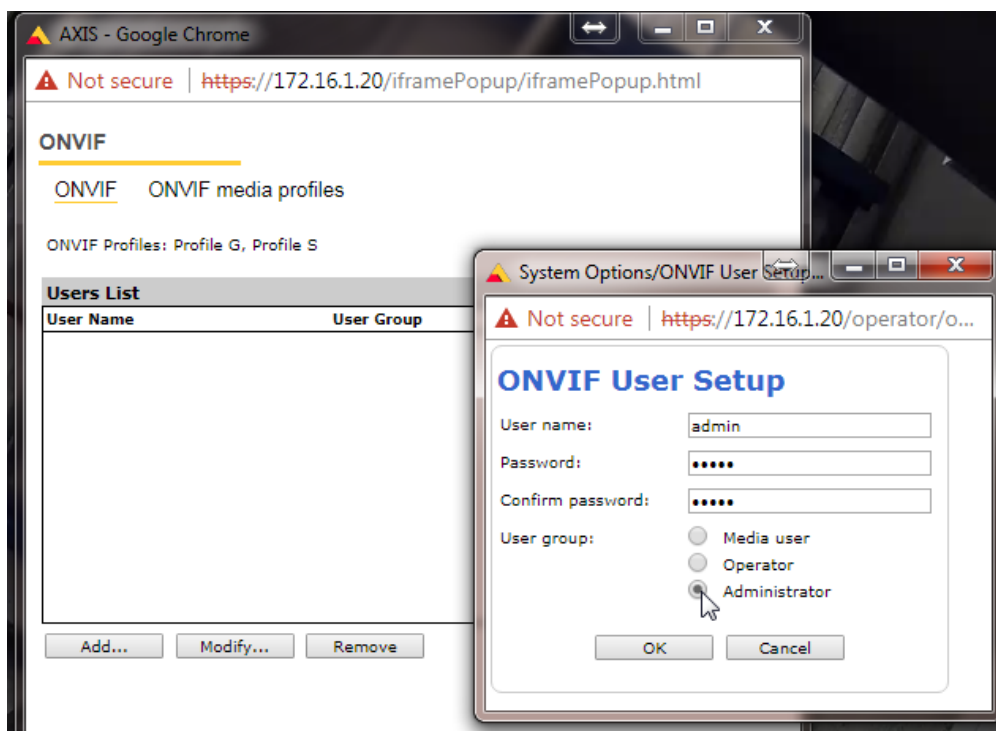
Daylight saving time adjustment ☒

Select Setting Page, then select ONVIF option



Next Set up a ONVIF User & media Profiles

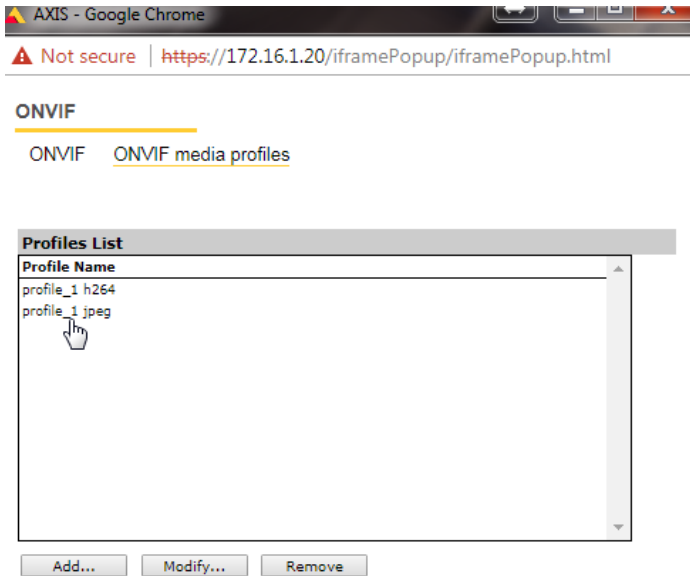
- Example in our set up was User:- admin PW:- admin
- Administrator has to be set if you wish to configure media setting via the VIPER



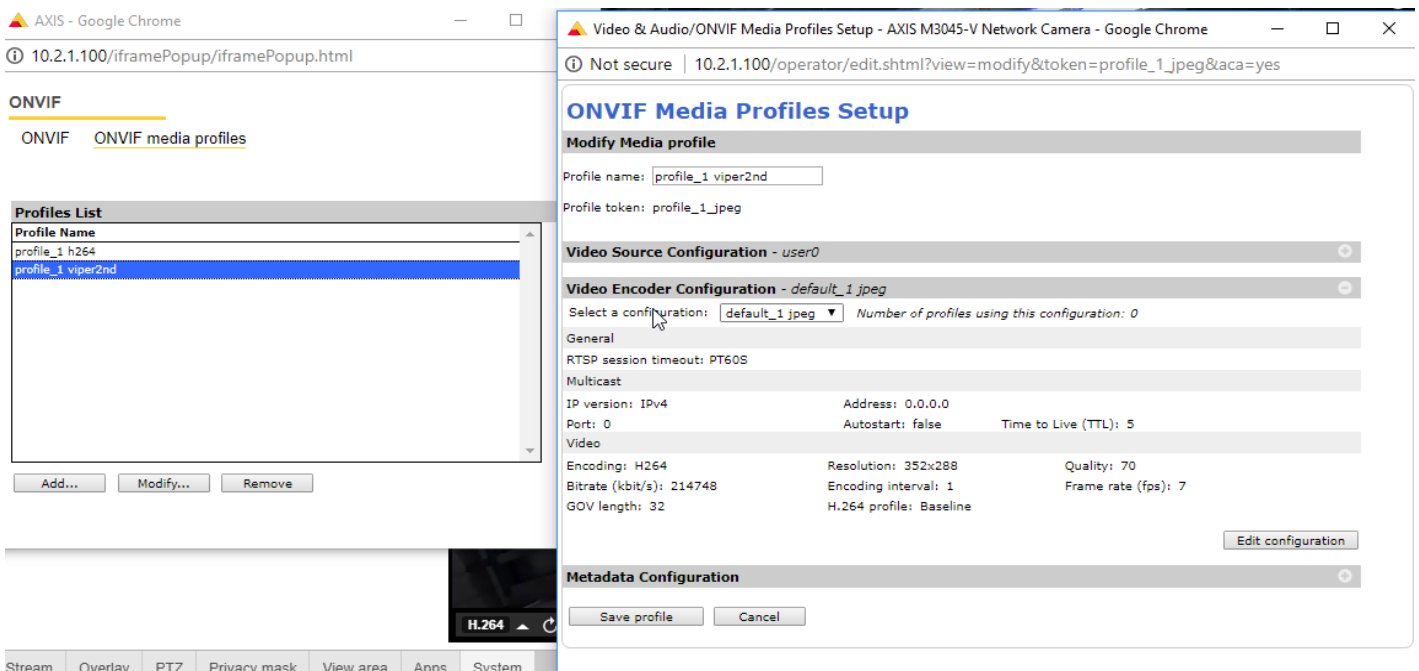
Configure ONVIF Media Profiles.

As default Axis camera has 2x ONVIF Profiles

- profile\_1 h264 is Max resolution max framerate. You can leave this as default and change in VIPER once connected
- profile\_1jpeg Default is jpeg (VIPER does not support JPEG)

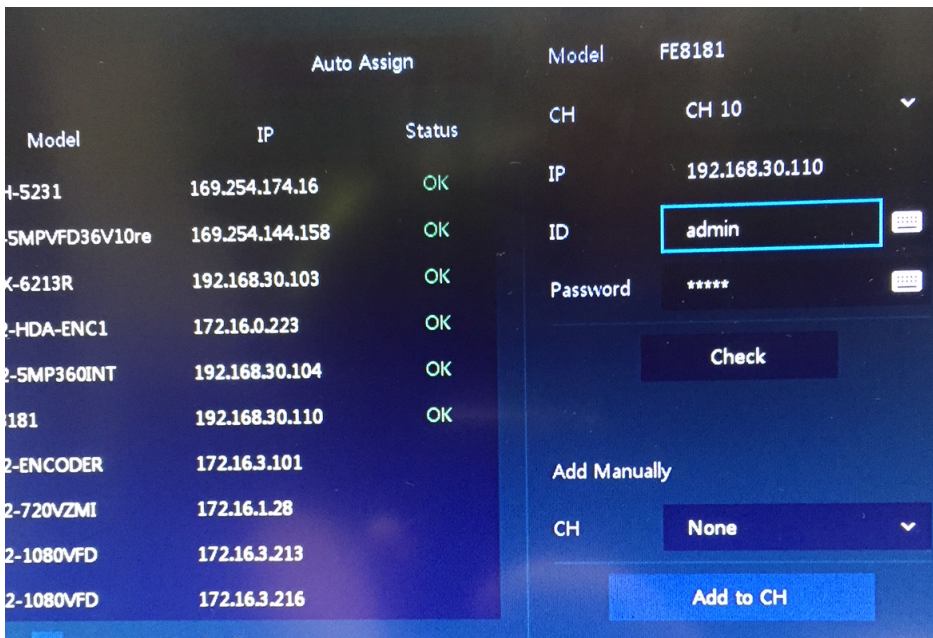


- Select Profile Name and click "Modify"
- This needs to be changed from jpeg to h.264 in the camera interface, click on profile and edit
  - Encoding - Change to H264
  - Resolution - Lower Resolution
  - Frame rate - Lower Frame rate
  - Rename profile for identification purposes
    - Example below



Once the above is completed plug the camera directly into the VIPER NVR the camera will be automatically added.

If "ONVIF" user details are not admin/admin then the correct login details will need to be entered.



## Method 2 [Connecting Camera on WAN Network]

Follow the above process except for the Time & Date set up, when using this method you need to set the camera NTP Server to the NVR IP Address.

### Date and time

Automatic date and time ☒

Year: 2018, Month: 05, Day: 25

Hour: 11, Min: 15

☒ Use 24-hour format

Connect to NTP-server

☐ Automatically (DHCP)

☒ Manually

NTP server

##VIPER WAN PORT ADDRESS##

Time zone

GMT (Dublin, Lisbon, London, Reykjavik)

Daylight saving time adjustment ☒

## Adding Web Interface Access

If a user is required for Web Interface access to the camera, other than Administrator. Follow step below to add Extra User.

Add a User in this example admin with a password of admin was set up  
Select Role

- Administrator
- Operator
- Viewer

**Users**

root  
Administrator

New

Username  
admin

New password  
\*\*\*\*\*

Repeat password  
\*\*\*\*\*

Password strength: Weak

Role  
Administrator

Cancel Save

This completes the procedure.

» Web: [vista-cctv.com](http://vista-cctv.com) » Email: [info@vista-cctv.com](mailto:info@vista-cctv.com) » Tel: 0118 912 5000

