



How to Add RTSP Streams

VISTA
KNOWLEDGE
BASE

INTRODUCTION

The following Procedure explains how to manually add RTSP streams to a VIPER NVR.

Note.

The procedure assumes you already know the RTSP stream URL of the device you wish to add.

Example URL `rtsp://ipaddress:554/stream/profile` {URL for Vista camera "`rtsp://ipaddress:554/1/stream1`"}

Method

- Right click on screen with mouse, Menu appears then left click [Log In] enter user and password to login (Fig 1)
- Using the Mouse move the cursor to the centre of a free channel
- Left click on [Add to Ch] (Fig 2)

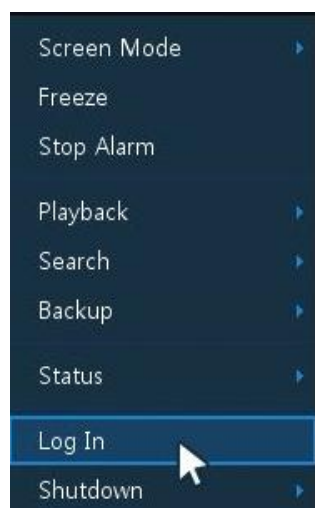


Fig 1

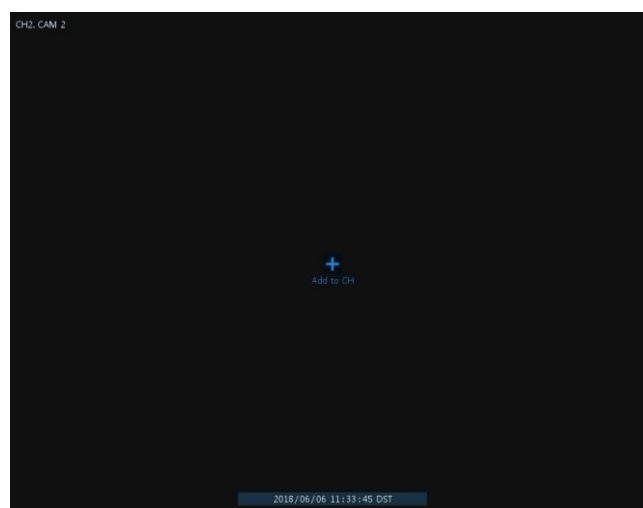


Fig 2

- Camera Registration Menu will appear (Fig 3)
- Select Connection Mode and change to RTSP URL
- Enter Username and Password of camera device you are adding
- Enter the RTSP URL for Primary and Secondary Streams {if device only supports single stream enter Primary only If no secondary stream is available no image will be displayed on layouts above 4way}
- Enter Port {default is 554 for RTSP} if this has been changed on device change to required port (Fig 4)

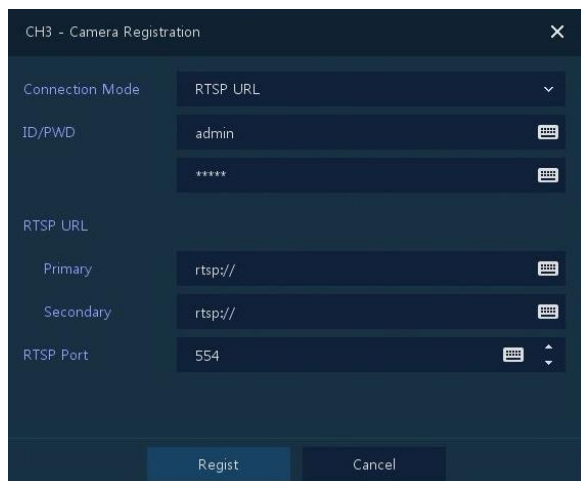


Fig 3

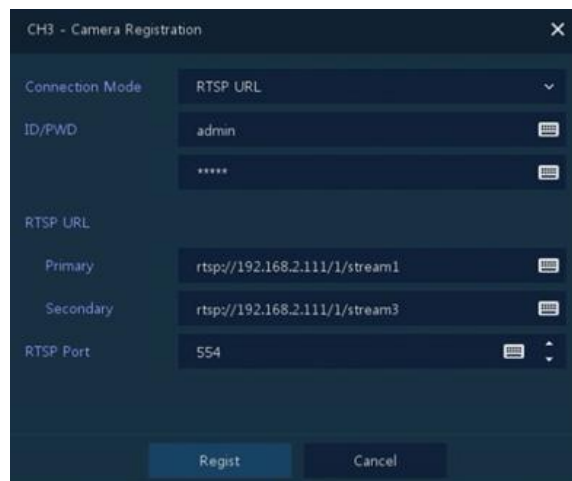


Fig 4

- Once details have been entered select [Regist] (Fig 5)
- Streams will be added and displayed if correct details are entered (Fig 6)

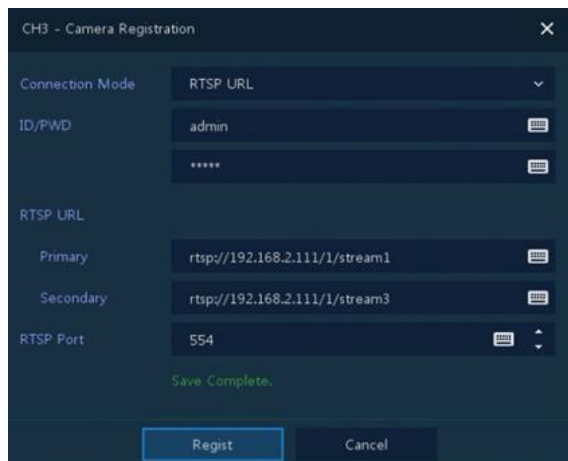


Fig 5

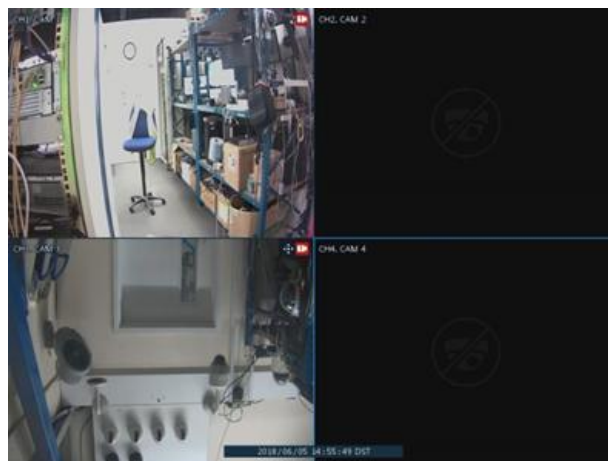


Fig 6

This completes the procedure.