

360Vision HD Predator

INTRODUCTION

The following information shows how to set up 360Vision HD Predator with a Smart device

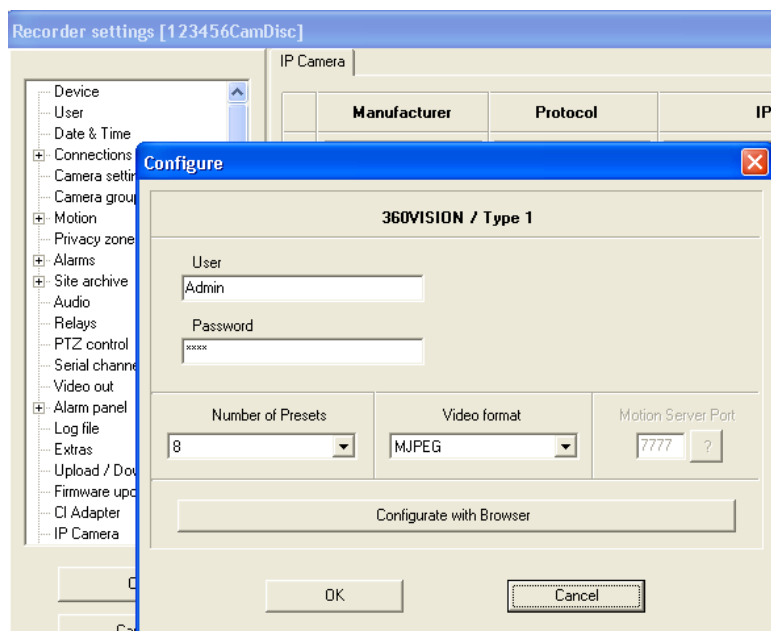
Notes: Please refer to the latest IP camera compatibility list for manufacturers and models. Only the SmartIP, SmartDisc+ E and ipVG support H.264, MJPEG & JPEG encoding, all other devices are MJPEG & JPEG.

It is assumed that the person carrying out this work is familiar with the Smart range of products (hardware / software) and the 360Vision HD Predator.

Please ensure that you have the required functions allocated (and noted) to the preset in the HD Predator prior to carrying out the following:

Set up the IP camera in the Smart device so that it knows it's a PTZ i.e. set it up as 360Vision.

Then select the number of presets as shown below. This then creates the R01 file in the RMCTRL folder.



Now find the R01 file in the RMCTRL folder the file name is the serial number of your device with an R01 extension (C:// Vistacont / RMCTRL is the default location).

Open the relevant R01 file with Notepad (.txt); it should look something like this:

```
[CAM1]
SWNUM=8
SWNAME1=Preset 1
SWNAME2=Preset 2
SWNAME3=Preset 3
SWNAME4=Preset 4
SWNAME5=Preset 5
SWNAME6=Preset 6
SWNAME7=Preset 7
SWNAME8=Preset 8
```

You can assign each button to a preset command, by using square brackets after the text and the desired preset number inside the brackets as shown below.

```
[CAM1]
SWNUM=8
SWNAME1=Preset 1 [001]
SWNAME2=Preset 2 [002]
SWNAME3=Preset 3 [003]
SWNAME4=Preset 4 [004]
SWNAME5=Preset 5 [005]
SWNAME6=Preset 6 [006]
SWNAME7=Preset 7 [007]
SWNAME8=Wiper [008]
```

For example in the HD Predator camera menu, 'Preset 8' has been assigned to the wiper function. Whatever preset you want associating with each button, you just put the preset number in the square brackets, you don't have to go from 1 to 8, as per the above example.

Additional notes:

When you close the R01 file you will need to save before closing (or you will lose the changes made).

It is suggested that you disconnect from Smart in the normal way, e.g. saving the settings etc to effect the changes onto the Smart device, then reconnect to check and test operation of the commands applied.

END