



*Quick Guide*

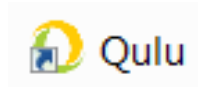


This quick guide is to assist operators with all the basic features of the VMS system. For a more detailed explanation please view the qulu technical manual or click the "?" on the top right corner of the software screen then click the area of the screen or menu if you require more assistance.

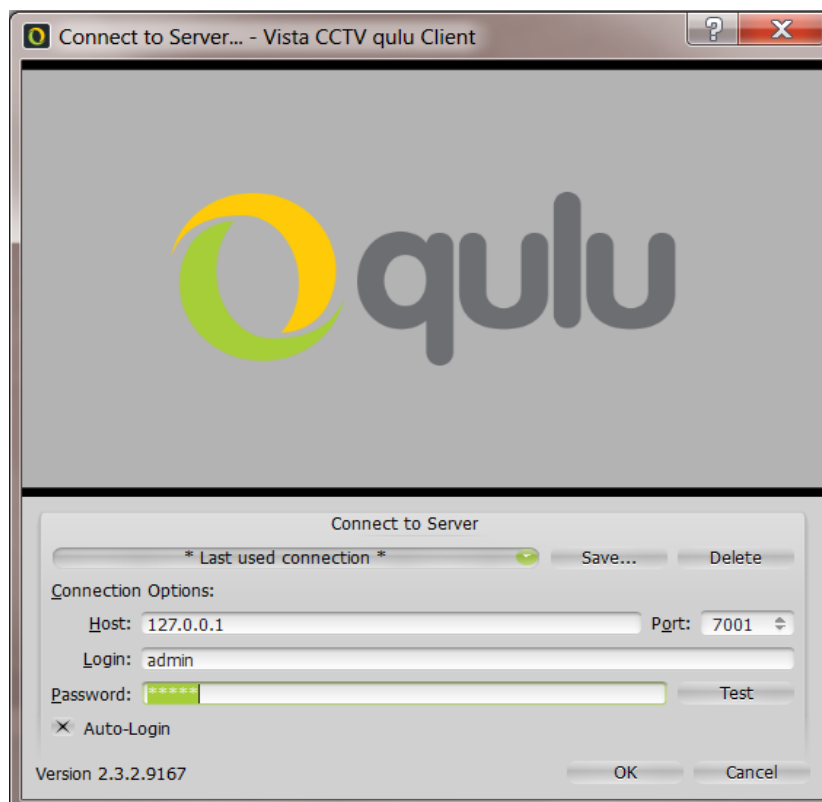
## **Contents**

System Log On	2
Camera Viewing	3
PTZ Camera Control	4
Layout Re-sizeing	5
Camera Zoom Windows	6
Saving Camera Views	7
Video Search and Playback	8
Video Motion Search	9
Save an Image	10
Exporting Video	11

On a PC with qulu client software already installed, double-click the qulu icon

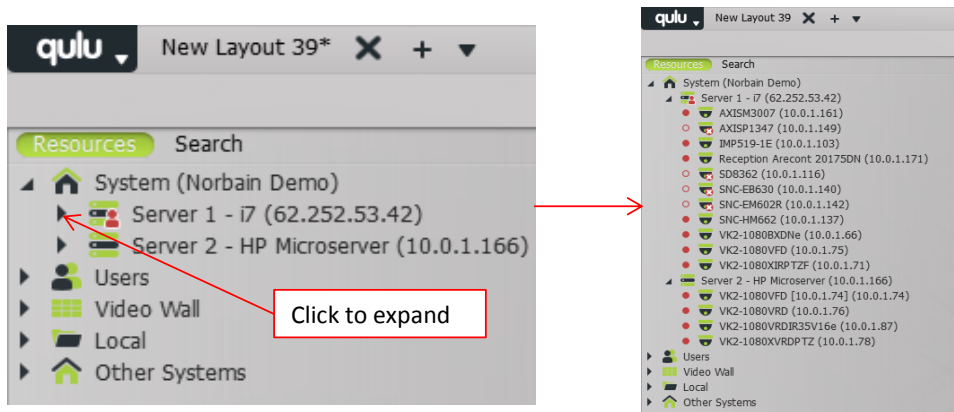


Enter login details. Host (IP address of the server you are connecting to), Login (ID) and Password must all be correct



## Camera Viewing

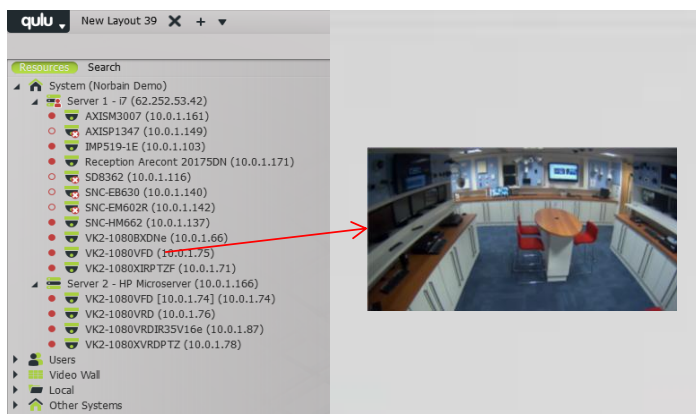
Click\expand the "Server" under Resources/System to view attached cameras. All cameras attached to this server will be displayed in the tree. The icons display the status of the camera



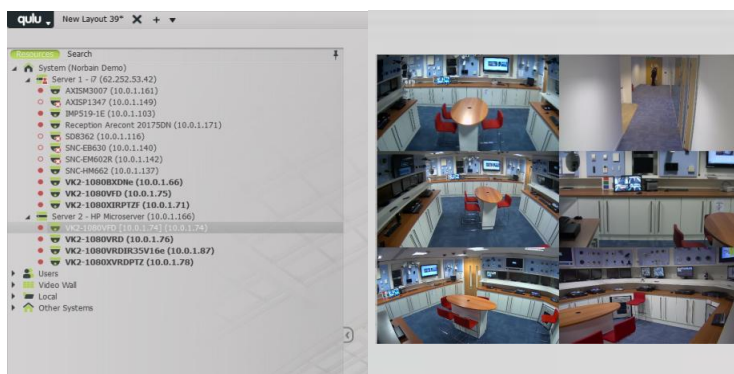
= Not connected  
 = Connected, not recording

= Connected & recording  
 = Not connected, but has previous recordings

Click and drag or double click a camera to the layout window on the right



This will create a new layout, you can drag and add more cameras



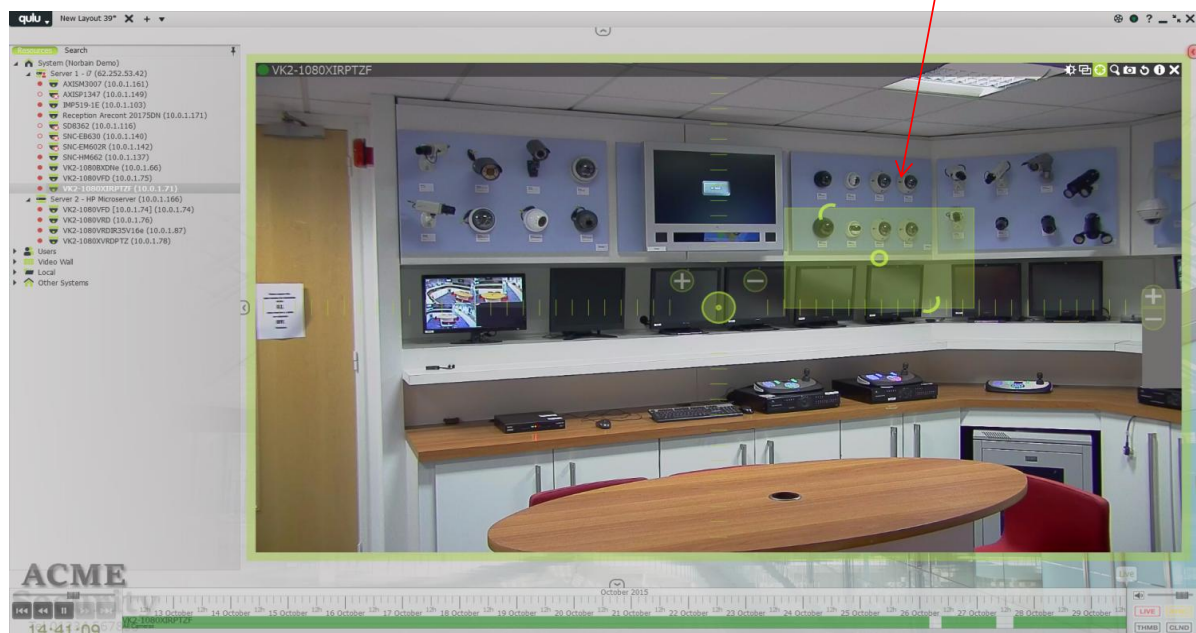
## PTZ Control

If you are controlling a PTZ dome select the PTZ icon and on-screen co-ordinates will be displayed on screen



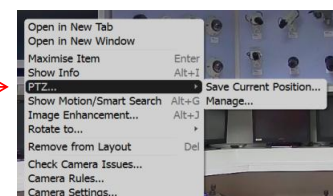
Click and hold the circle at the centre of the screen and move around to your required view. To zoom in/out use the + and - buttons

Alternatively click the screen and the PTZ dome will move to that position. If you click and hold to draw a box the PTZ dome will pan/tilt and zoom to your selected position (this feature is "device dependant" and not all PTZ domes are supported)



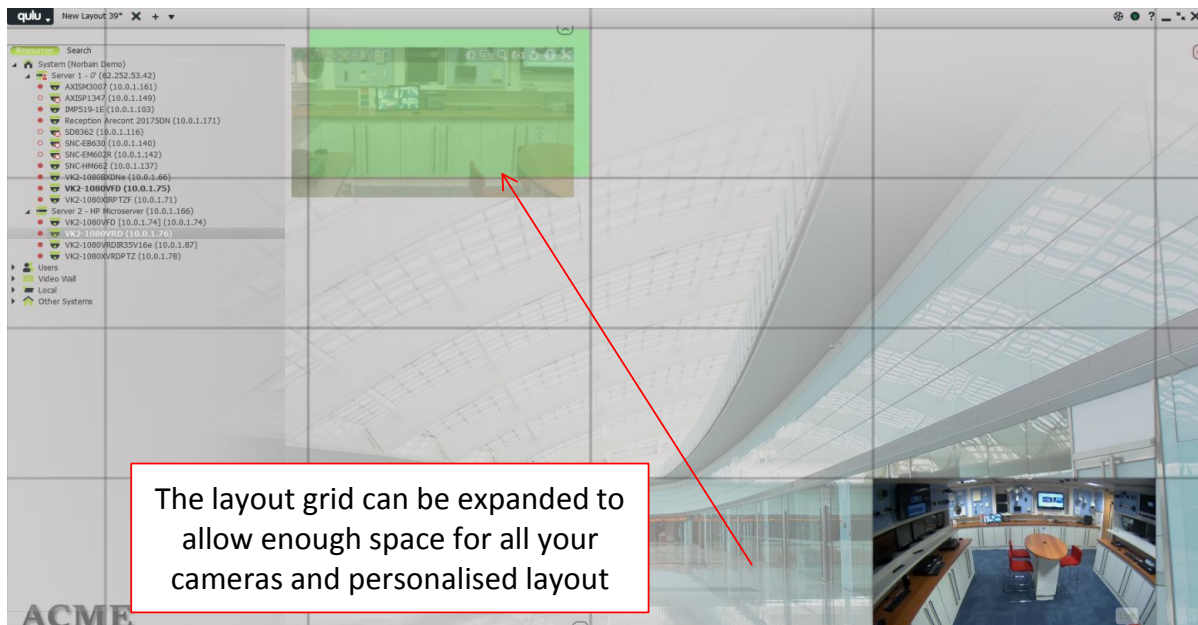
Right click on the view and you can Save Current Position (preset) or go to a saved position

"Quick keys" nos 1 to 0 on your keyboard can be used to call presets. Preset 1 = 1, preset 2 = 2 etc

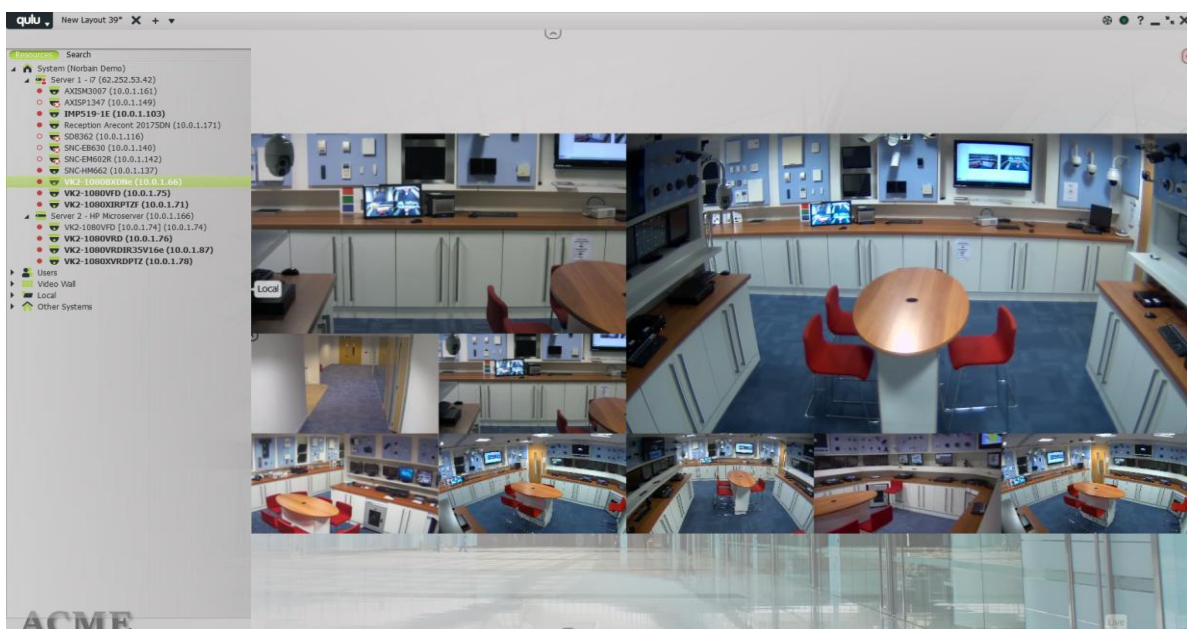





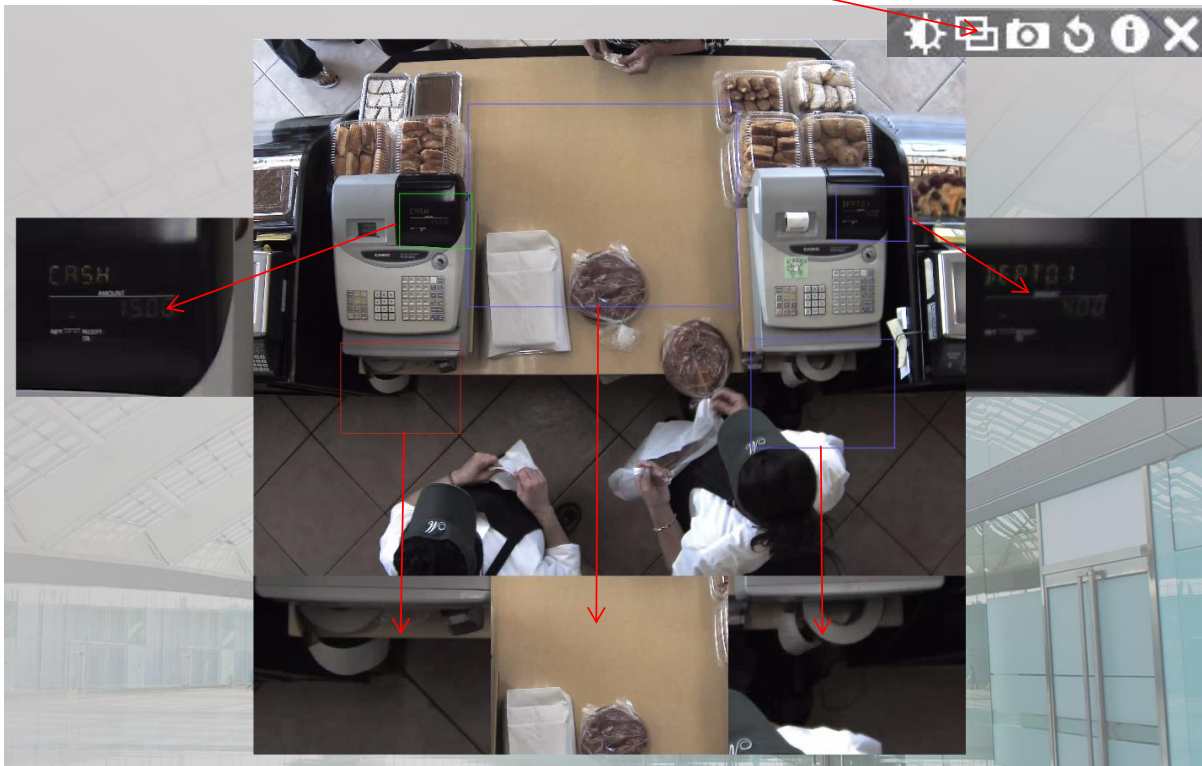
Camera boxes can be re-sized to obtain the perfect view. With 2 or more cameras in the layout simply drag one of the cameras to the left diagonally. This will create a larger virtual layout in the background



You can re-size the cameras, add more cameras and re-size. The view below shows 7 small views and 2 other cameras with larger coverage of the layout



Camera Zoom Windows creates extra areas to view within the same camera. Click on the icon  at the top right of the camera image you want to create zoom windows, then highlight the area you want to expand into a box shape. The area will then be displayed as a separate box. This can be done many times on each camera



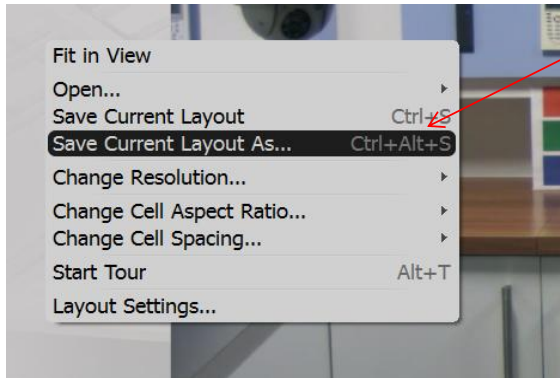
This view shows a single camera in a retail environment, 5 zoom windows have been created for closer inspection of the scene

- Main camera view in the centre
- Left till LED display
- Left till cash drawer
- Central area of service
- Right till LED display
- Right till cash drawer

Multiple Zoom Windows can be moved from one camera to another including cameras in playback (see playback section on how to review video footage)



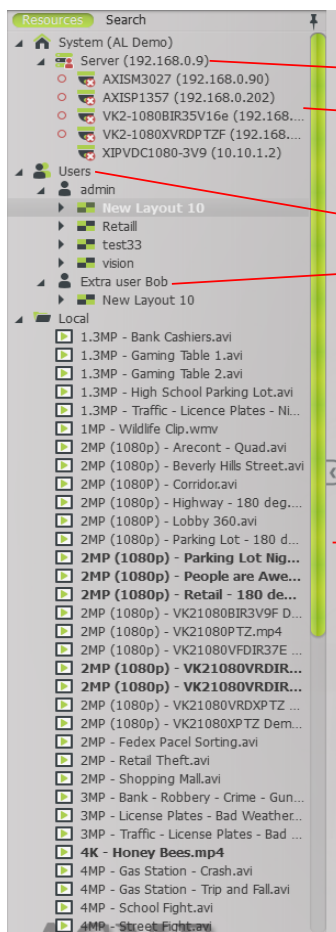
When you have constructed a view and wish to save it, right click anywhere in the grey area just outside your layout and select "Save Current Layout"



Alternatively Ctrl+S & Ctrl+Alt+S can be used to save layouts

"Quick keys" are available throughout the qulu menus, for more info please refer to the main qulu manual

The layout will then appear on the left under your personal "User" profile, or Administrator depending on your user rights to the system



Recording server you are connected to

Cameras connected to that server

Users set up on system with saved layouts

Additional user "Bob" with a saved layout

Local section - displays any video footage you have archived

Additionally you may see "Video Wall" displayed. This is provided on larger systems where multiple users share multiple viewing monitors (not covered in this manual)

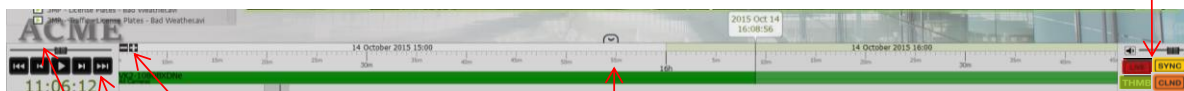
In live mode and the camera you are viewing is being recorded you will see the playback bar at the bottom of the screen, click to playback. To change to another camera in playback simply click the camera on the screen layout.

SYNC - click in play/live mode to synchronise all cameras to the same mode

LIVE - click in playback and the camera image will revert back to live

CLND - click to view and search recorded video (explained below)

THMB - click to view playback thumbnails (explained below)

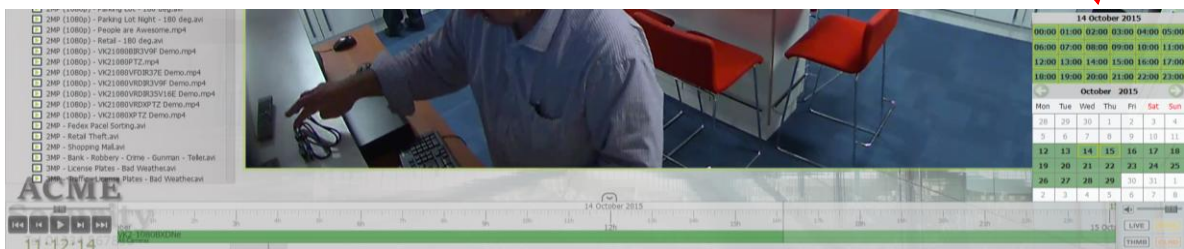


Either scroll your mouse wheel when the cursor is on the timeline or use the + and - buttons to adjust time view

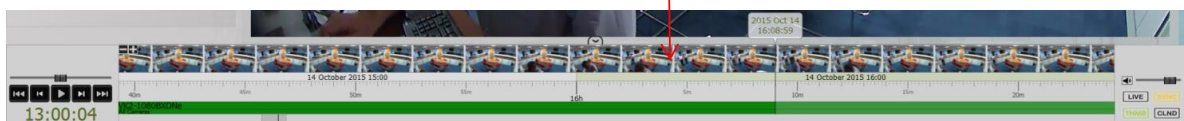
In playback mode you can select, rewind, frame rewind, play/pause, fast forward, frame forward

Move the bar to chose the playback speed

Calendar search - click CLND, select the date, the time and then click on the playback bar

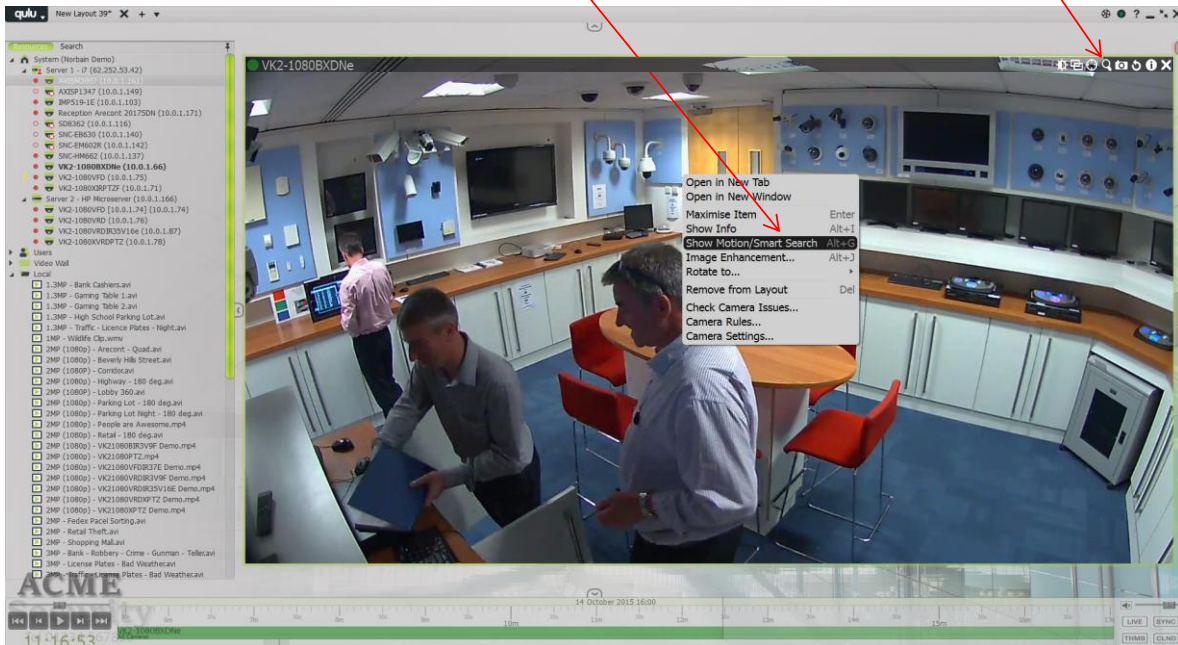


Thumbnail search - click THMB, select the thumbnail you wish to view. Click THMB again to hide the thumbnail bar

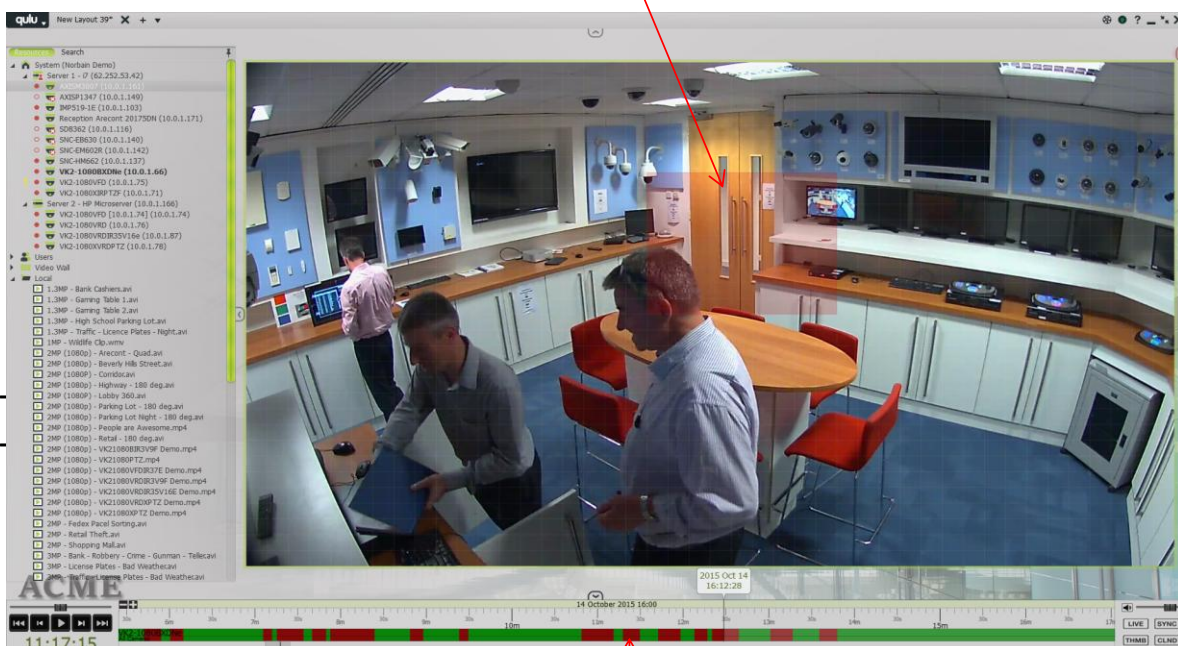


In playback mode Video Motion Search provides a quick search of a selected area to display any movement

Right click the menu and select Show Motion/Smart Search or select the "Search" icon



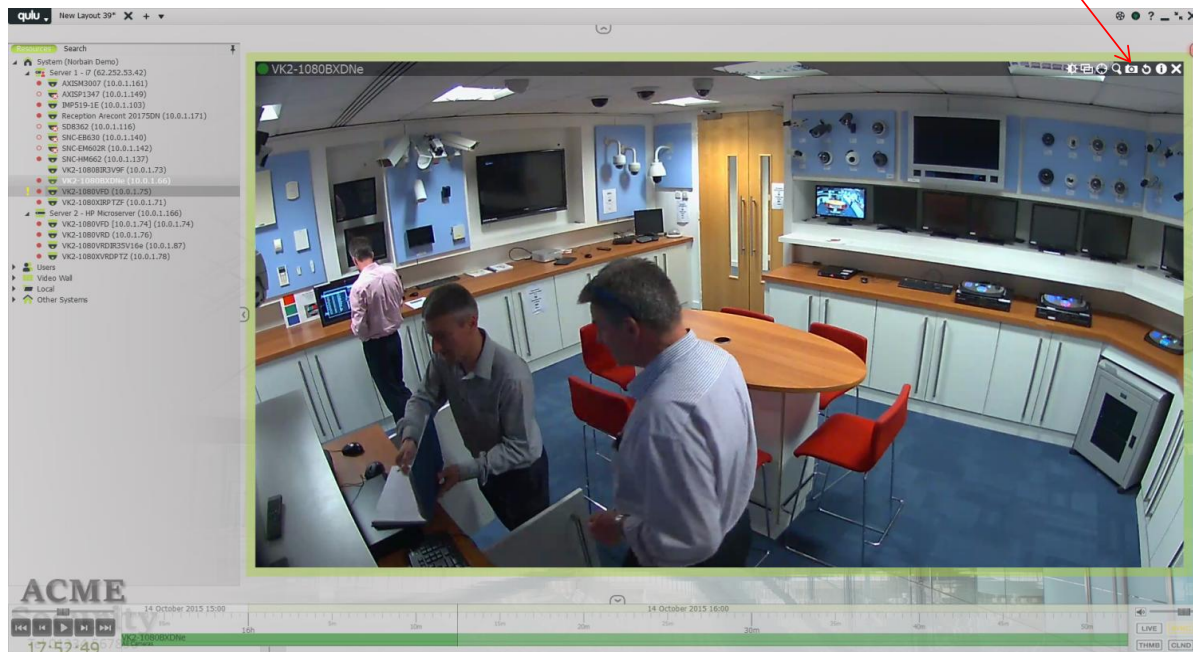
Left click and drag the mouse cursor to draw a box where you want to search for motion. Eg. On an entrance door



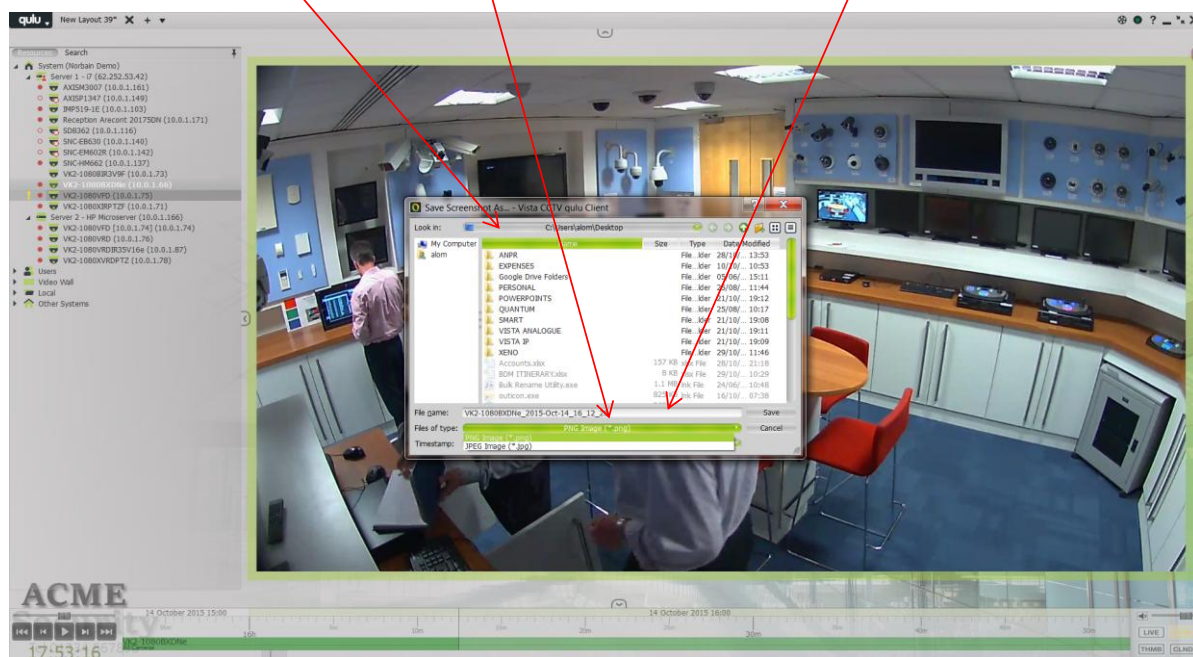
When you release the mouse click an instant result of motion events is displayed in Red. Click on any event to review the motion event. In this mode and in playback you will see events played in sequence



In live or playback mode an image can be saved. Click the icon



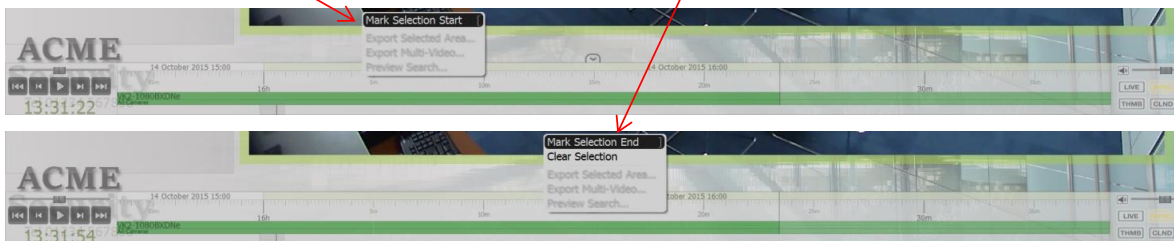
Select the folder (or use the default), rename the file if required, select the image to be either PNG or JPEG, select save



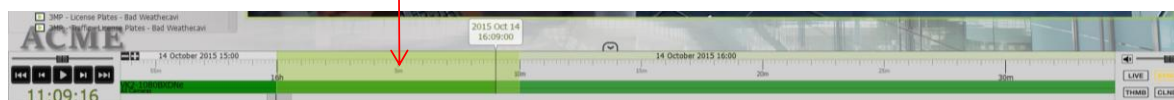
## Exporting Video

The qulu exporting video process is done using the playback bar

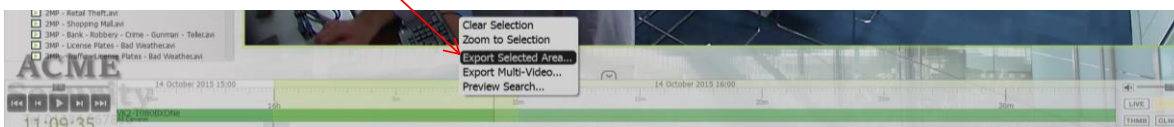
When you know what you want to export, right click and select Mark Selection Start. Then move the cursor to the end of your selected time, right click again and select Mark Selection End.



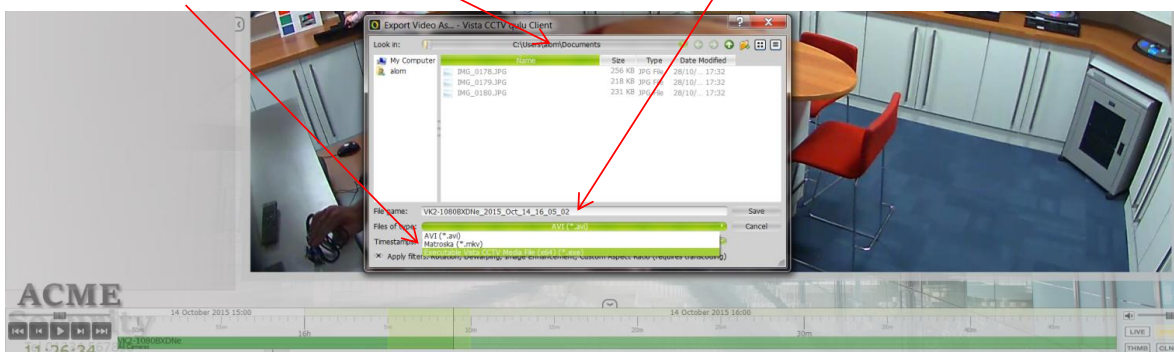
The selected area will be highlighted



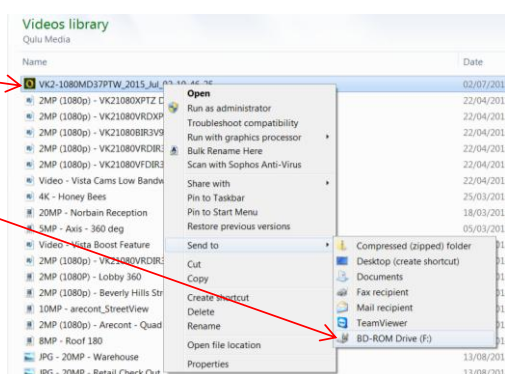
Right click and select Export Selected Area



Select the folder (or use the default), rename the file if required, select the format either Executable Vista CCTV Media File which includes the qulu player or AVI, select save and the video will now be exported



If you require the exported video burning to CD/DVD, locate the saved video file on your PC. Right click, send to CD/DVD-ROM Drive (if your PC supports this feature). If the video file was exported in the executable format it can be played on another PC with the qulu software included in the export file.





**EMAIL**  
info@vista-cctv.com



**WEB**  
vista-cctv.com



**TEL**  
+44 (0) 118 912 5000

Vista, 210 Wharfedale Road,  
Winnersh Triangle, Wokingham,  
Berkshire RG41 5TP, England.