



VIPER: How to Manually Add a ONVIF Compatible Device



INTRODUCTION

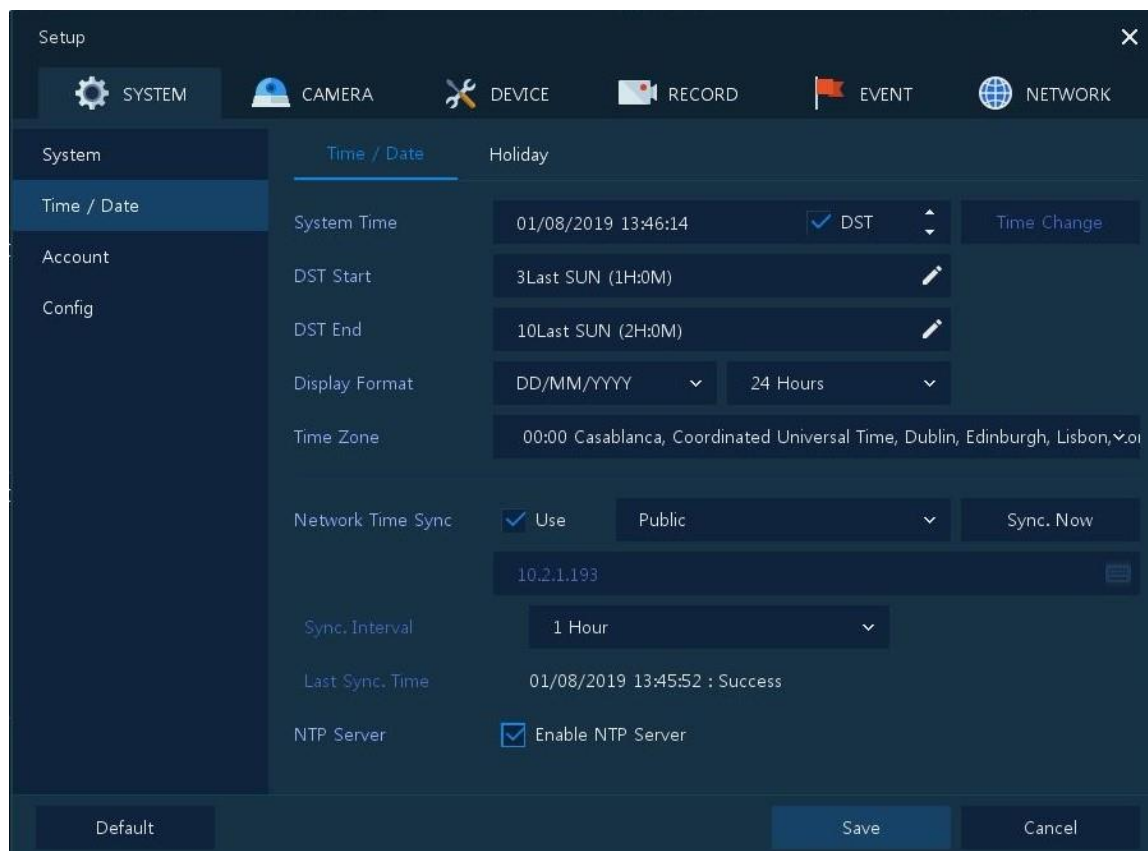
The following Procedure explains how to manually add a ONVIF Compatible Device to a VIPER NVR/DVR Range.

Note.

The procedure assumes you already have activated / enabled "ONVIF Support" on the Device.

It is important to make sure the Time & Date are the same as the Viper Unit.

Within the Device Menu/Configuration point the time and date to the VIPERS IP Address as these units have a built in NTP Server.



Method

- Right click on screen with mouse, Menu appears then left click [Log In] enter user and password to login (Fig 1)
- Using the Mouse move the cursor to the centre of a free channel
- Left click on [Add to Ch] (Fig 2)

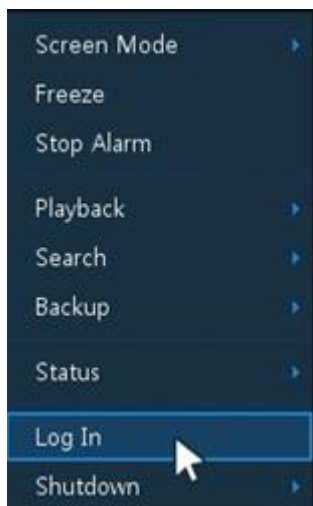


Fig 1

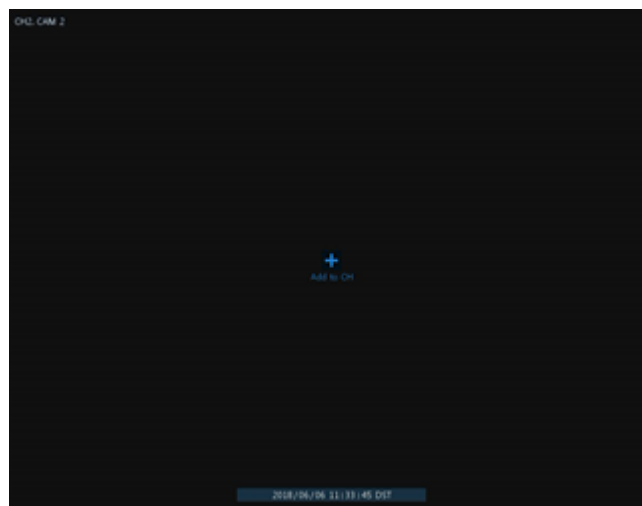


Fig 2

- Camera Registration Menu will appear (Fig 3)
- Select Connection Mode change to ONVIF URL (Default)
- Enter Username and Password of camera/device you are adding
- Click on "Onvif URL" You can then edit URL {Replace 'URL' with Device IP Address (Fig 4)}

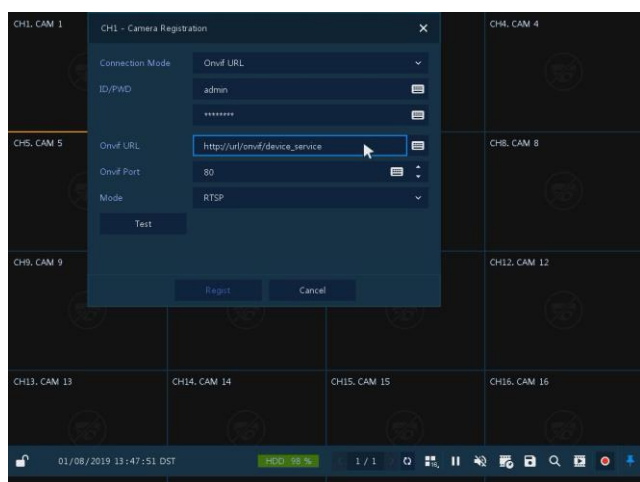


Fig 3

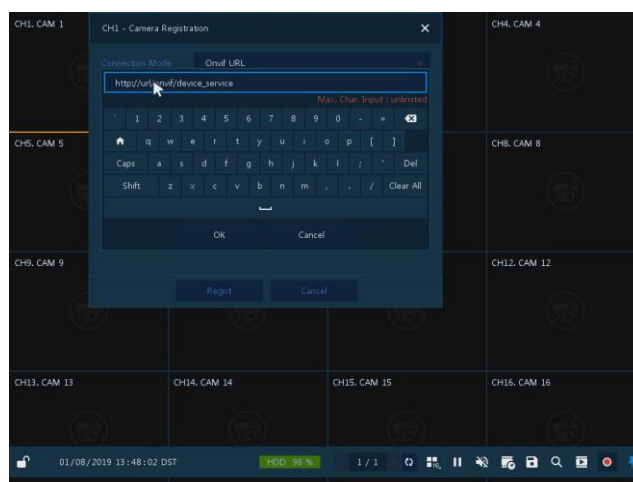


Fig 4



- Once Device IP address is entered Click on Test (Fig 5)
- If Details are correct "Connected" will be displayed (Fig 6)

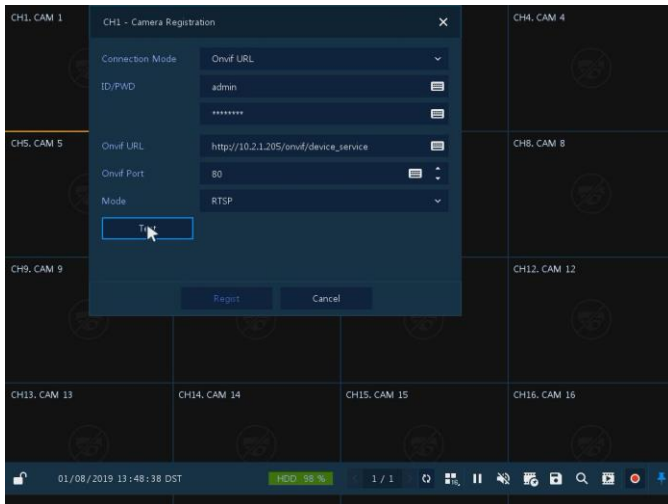


Fig 5

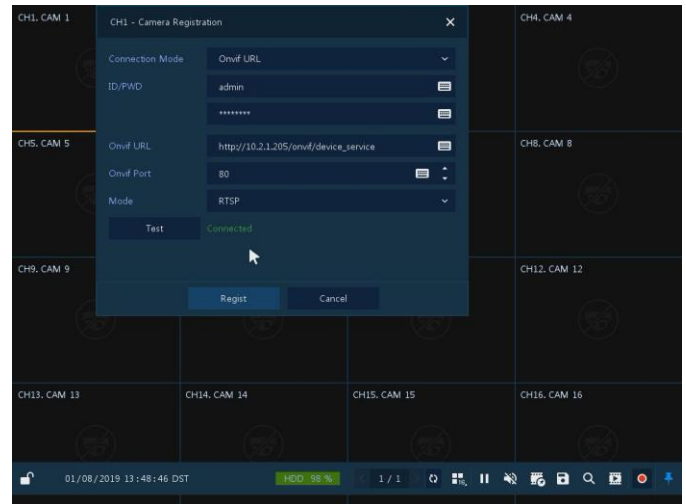


Fig 6

- Once details have been entered select [Regist] (Fig 7)
- Streams will be added and displayed if correct details are entered (Fig 8)

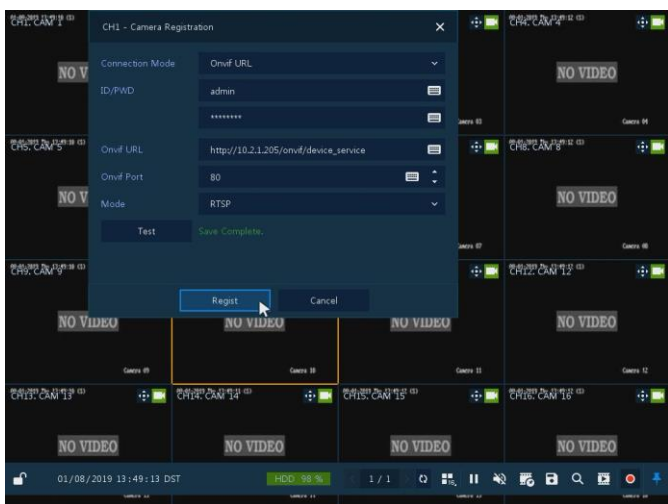


Fig 7

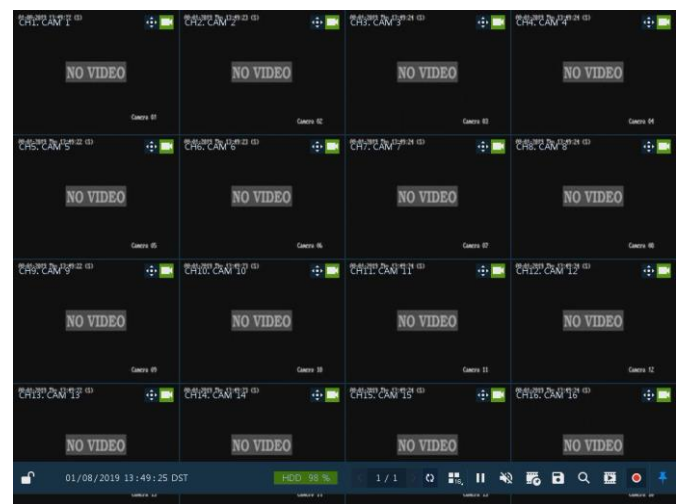


Fig 8

This completes the procedure.