



VIPER: How to Manually Add a HikVision DS-6716HWI Encoder



INTRODUCTION

The following Procedure explains how to manually add a HikVision DS-6716HWI Encoder to a VIPER NVR/DVR Range.
If added to Chan 1 on VIPER the remaining 15x inputs from Encoder will be added to the VIPER. [See Fig 8]

Note.

The procedure assumes you already have activated the Encoder via "SADP Tool".
It is important to make sure the Time & Date are the same as the Viper Unit.

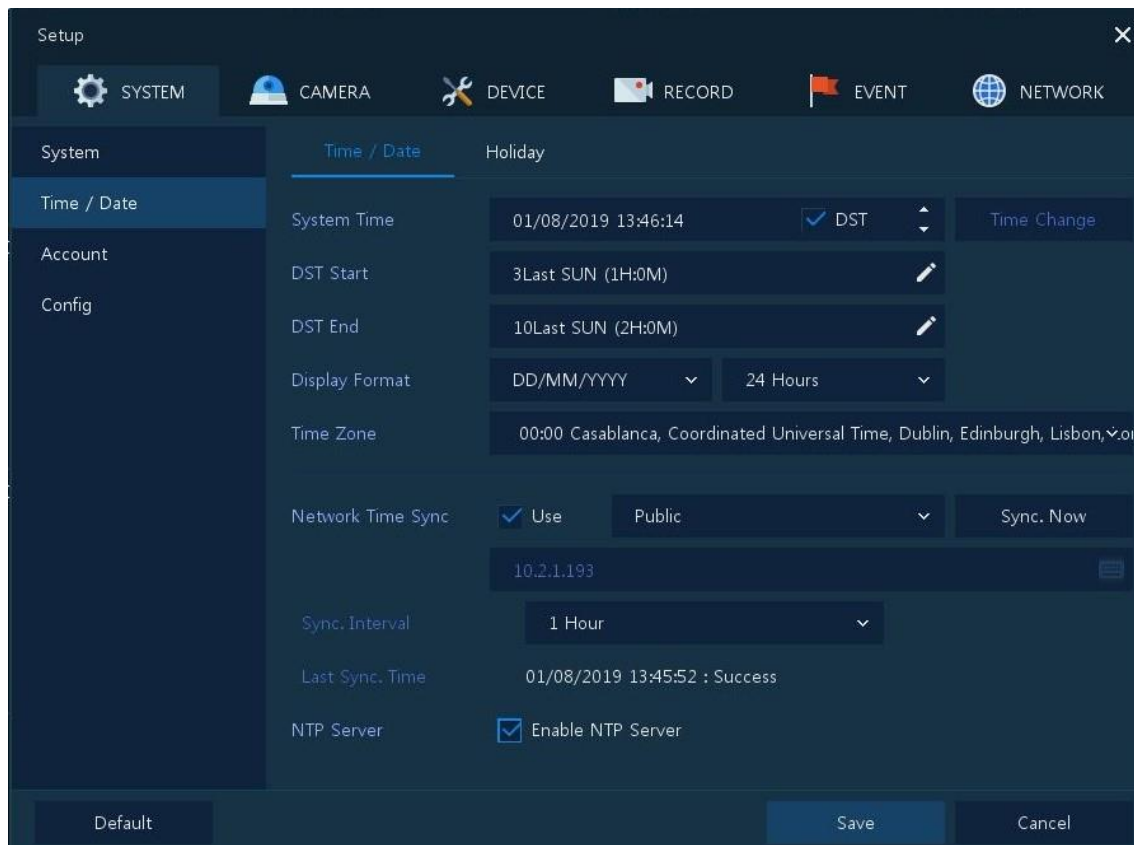
Within the Device Menu/Configuration point the time and date to the VIPERS IP Address as these units have a built in NTP Server.

Below is example how to set up the Encoders Time & Date

The screenshot displays the HikVision DS-6716HWI web interface. The top navigation bar includes 'Live View', 'Playback', 'Log', and 'Configuration'. The left sidebar shows a tree view with 'Configuration' expanded, containing 'Local Configuration', 'Remote Configuration', 'Device Parameters', 'Device Information', 'Time Settings' (highlighted), 'Advanced', 'Camera Settings', 'Network Settings', 'Serial Port Settings', 'Alarm Settings', 'Exception', 'User Management', 'HDD Management', and 'Maintenance'. The main panel is titled 'Time Settings' and contains the following fields:

- Time Zone:** (GMT+00:00) Dublin, Edinburgh, London
- NTP:** ☒ NTP
- Server Address:** ViperIPAddress
- NTP Port:** 123
- Interval:** 2 min.
- Manual Time Sync:** ☐ Manual Time Sync.
- Device Time:** 2019-08-05T09:06:36
- Set Time:** [Calendar icon] ☐ Sync. with computer time
- Enable DST:** ☒ Enable DST
- Start Time:** Mar Last Sun 01
- End Time:** Oct Last Sun 02
- DST Bias:** 60min
- Save:** [Save button]

VIPER Time & Date Set up Page



The screenshot shows the 'Setup' window for the VIPER system. The 'SYSTEM' tab is selected, and the 'Time / Date' sub-tab is active. The left sidebar contains 'System', 'Time / Date', 'Account', and 'Config'. The main area is divided into 'Time / Date' and 'Holiday' sections. The 'Time / Date' section includes fields for System Time (01/08/2019 13:46:14), DST (checked), DST Start (3Last SUN (1H:0M)), DST End (10Last SUN (2H:0M)), Display Format (DD/MM/YYYY), Time Zone (00:00 Casablanca, Coordinated Universal Time, Dublin, Edinburgh, Lisbon, etc.), Network Time Sync (checked, Use Public, Sync. Now), Sync. Interval (1 Hour), Last Sync. Time (01/08/2019 13:45:52 : Success), and NTP Server (checked, Enable NTP Server). The 'Holiday' section is currently empty. At the bottom, there are 'Default', 'Save', and 'Cancel' buttons.

Method

- Right click on screen with mouse, Menu appears then left click [Log In] enter user and password to login (Fig 1)
- Using the Mouse move the cursor to the centre of a free channel
- Left click on [Add to Ch] (Fig 2)

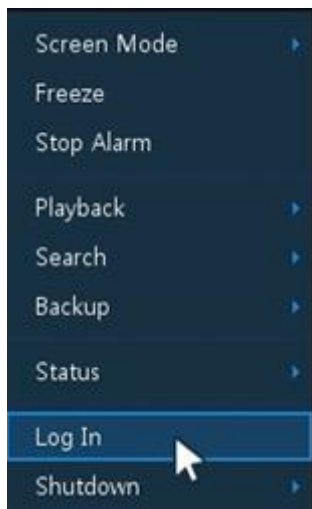


Fig 1

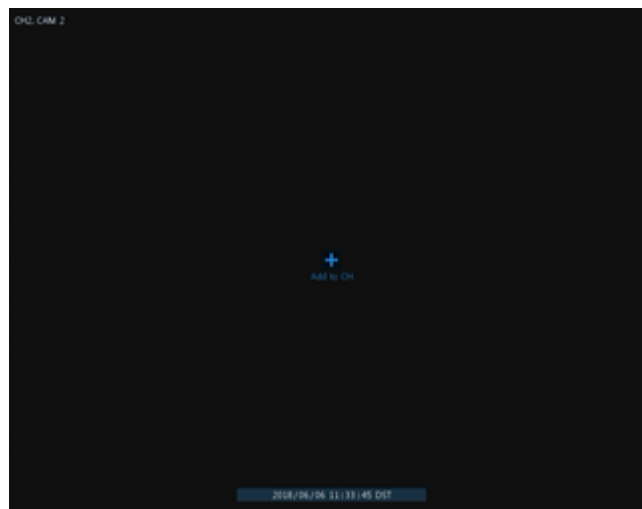


Fig 2

- Camera Registration Menu will appear (Fig 3)
- Select Connection Mode change to ONVIF URL (Default)
- Enter Username and Password of camera/device you are adding
- Click on "Onvif URL" You can then edit URL {Replace 'URL' with Device IP Address (Fig 4)

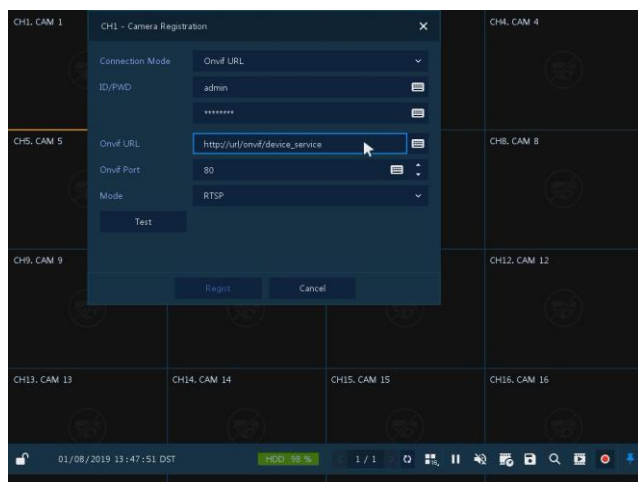


Fig 3

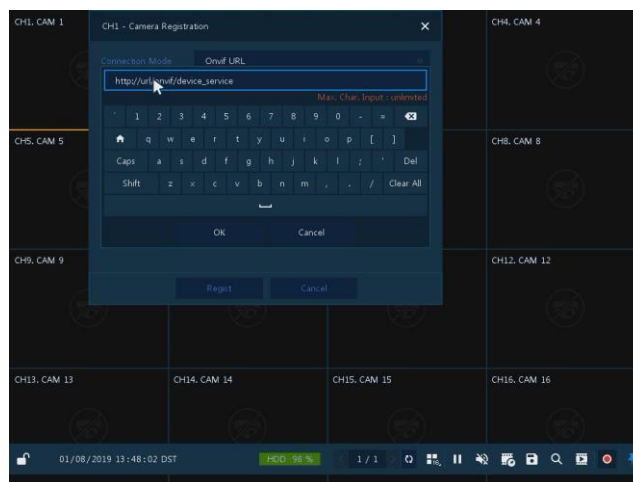


Fig 4

- Once Device IP address is entered Click on Test (Fig 5)
- If Details are correct "Connected" will be displayed (Fig 6)

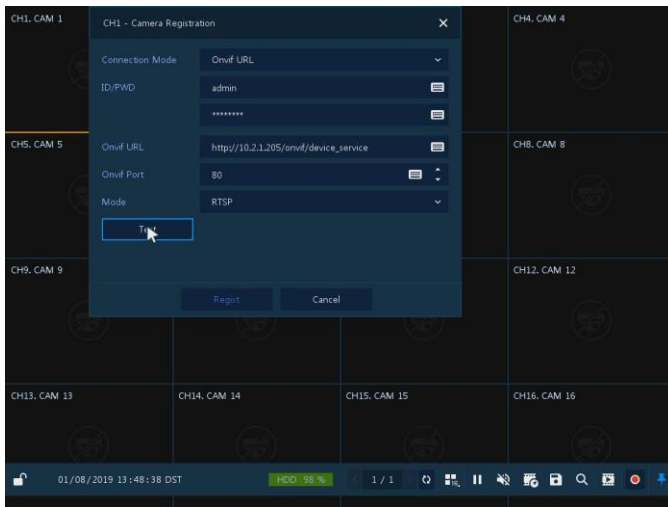


Fig 5

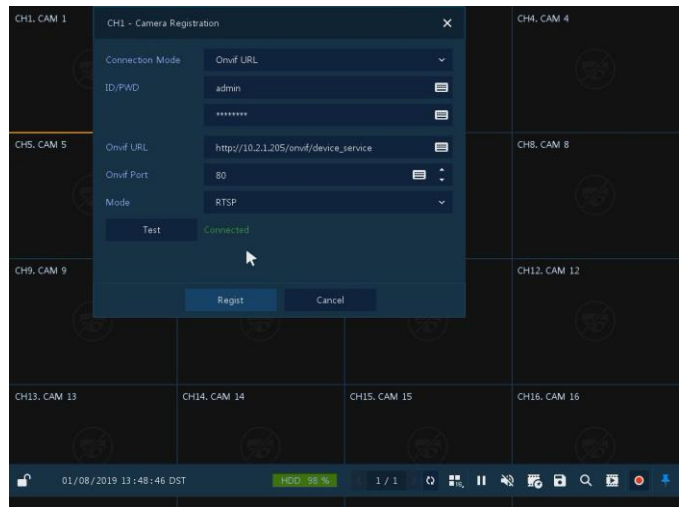


Fig 6

- Once details have been entered select [Register] (Fig 7)
- Streams will be added and displayed if correct details are entered (Fig 8)

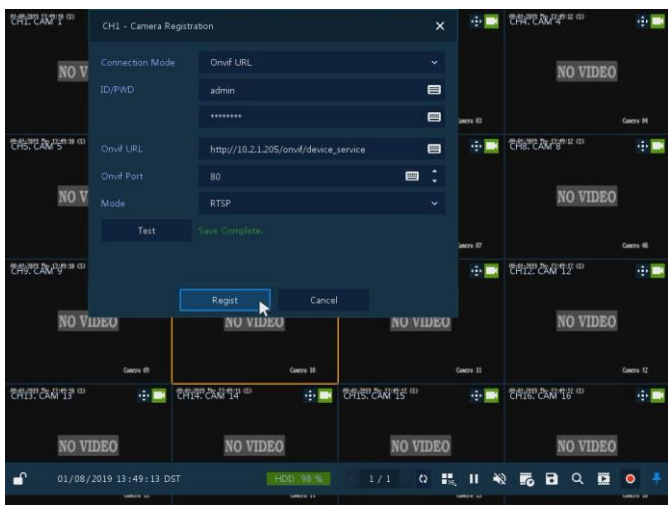


Fig 7

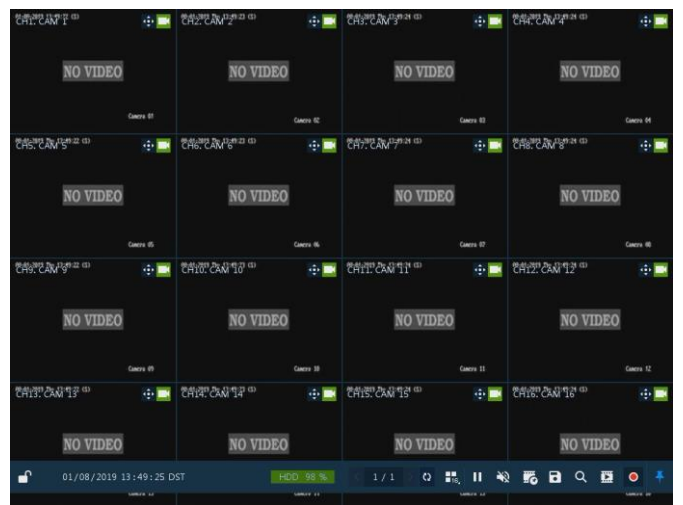


Fig 8

This completes the procedure.