



VIPER: How to Manually Add a HikVision DS-7208/16 Recorder



INTRODUCTION

The following Procedure explains how to manually add a HikVision DS-7208/16 Recorder to a VIPER NVR/DVR Range.

If added to Chan 1 on VIPER the remaining 7/15 inputs from Recorder will be added to the VIPER. [See Fig 8]

Note.

The procedure assumes you already have activated the Recorder via "SADP Tool".

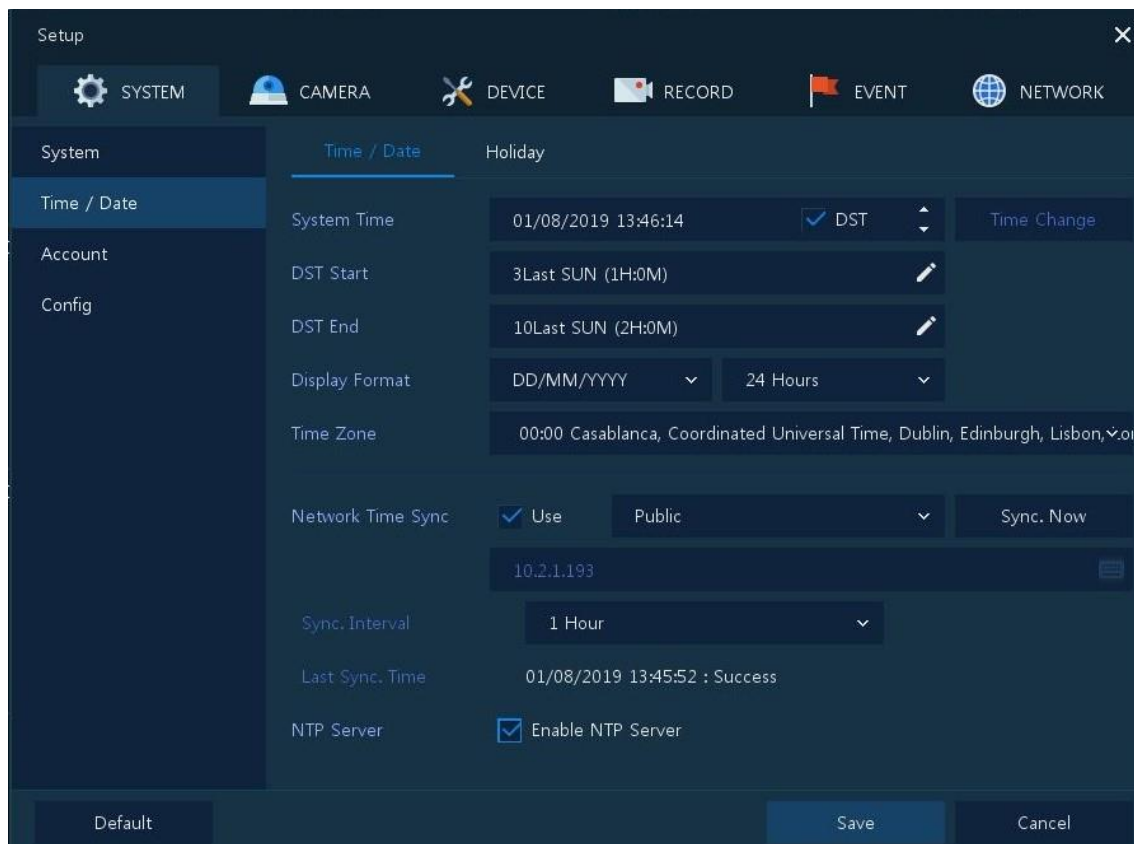
It is important to make sure the Time & Date are the same as the Viper Unit.

Within the Device Menu/Configuration point the time and date to the VIPERS IP Address as these units have a built in NTP Server.

Below is example how to set up the Recorders Time & Date

The screenshot displays the HikVision web interface's Configuration menu, specifically the 'Time Settings' tab. The left sidebar shows various system settings categories, with 'System Settings' highlighted. The main content area is divided into sections for 'Basic Information', 'Time Settings', 'RS-485', and 'Menu Output'. Under 'Time Settings', the 'Time Zone' is set to '(GMT+00:00) Dublin, Edinburgh, London'. The 'NTP' section is active, showing 'Server Address' as 'ViperIPAddress', 'NTP Port' as '123', and 'Interval' as '60 min'. Below this, the 'Manual Time Sync.' section is visible, with 'Device Time' and 'Set Time' both showing '2019-08-06T09:53:44'. The 'DST' section is also visible, with 'Enable DST' checked and 'Start Time' set to 'Mar Last Sun 01'. A red 'Save' button is located at the bottom of the configuration area.

VIPER Time & Date Set up Page



The screenshot shows the 'Setup' window with the 'SYSTEM' tab selected. The 'Time / Date' sub-tab is active, displaying various time and date settings. The 'System Time' is set to 01/08/2019 13:46:14, with DST checked. The 'DST Start' is 3Last SUN (1H:0M) and 'DST End' is 10Last SUN (2H:0M). The 'Display Format' is DD/MM/YYYY and 24 Hours. The 'Time Zone' is 00:00 Casablanca, Coordinated Universal Time, Dublin, Edinburgh, Lisbon, etc. The 'Network Time Sync' is checked and set to 'Public'. The 'Sync. Now' button is visible. The 'Sync. Interval' is 1 Hour. The 'Last Sync. Time' is 01/08/2019 13:45:52 : Success. The 'NTP Server' is checked and set to 'Enable NTP Server'. The 'Default', 'Save', and 'Cancel' buttons are at the bottom.

System	Time / Date	Holiday
System Time	01/08/2019 13:46:14	<input checked="" type="checkbox"/> DST
DST Start	3Last SUN (1H:0M)	
DST End	10Last SUN (2H:0M)	
Display Format	DD/MM/YYYY	24 Hours
Time Zone	00:00 Casablanca, Coordinated Universal Time, Dublin, Edinburgh, Lisbon, etc.	
Network Time Sync	<input checked="" type="checkbox"/> Use	Public
Sync. Now	Sync. Now	
Sync. Interval	1 Hour	
Last Sync. Time	01/08/2019 13:45:52 : Success	
NTP Server	<input checked="" type="checkbox"/> Enable NTP Server	

Method

- Right click on screen with mouse, Menu appears then left click [Log In] enter user and password to login (Fig 1)
- Using the Mouse move the cursor to the centre of a free channel
- Left click on [Add to Ch] (Fig 2)

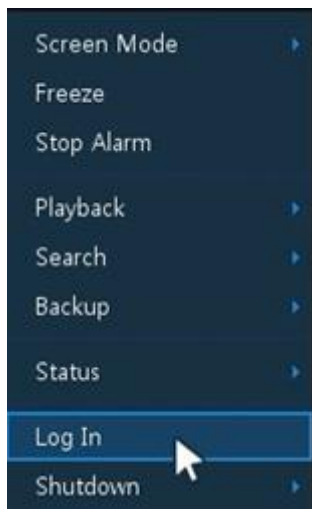


Fig 1

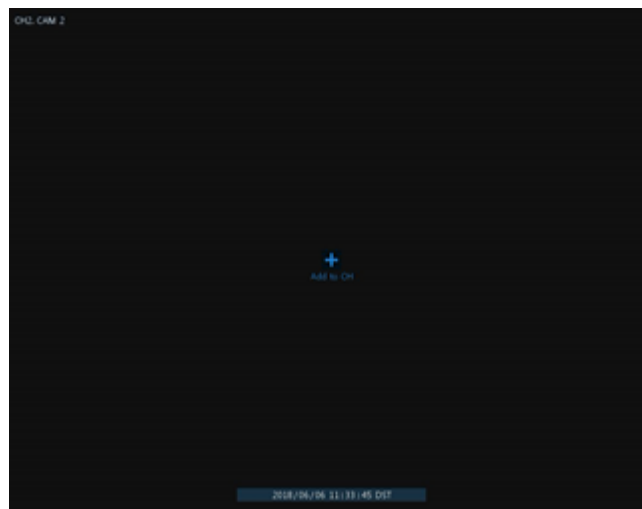


Fig 2

- Camera Registration Menu will appear (Fig 3)
- Select Connection Mode change to ONVIF URL (Default)
- Enter Username and Password of camera/device you are adding
- Click on "Onvif URL" You can then edit URL {Replace 'URL' with Device IP Address (Fig 4)}

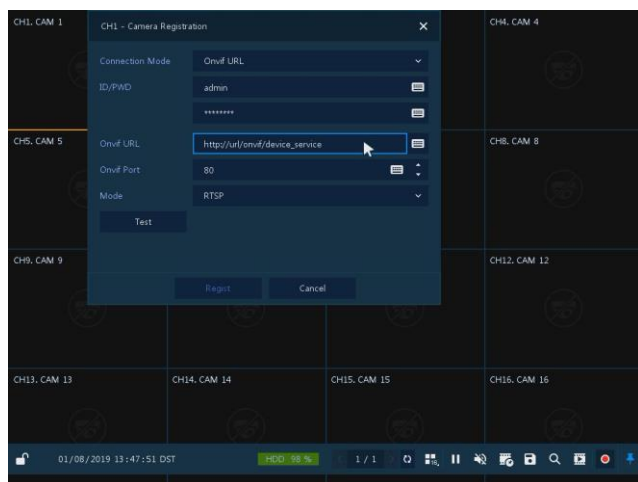


Fig 3

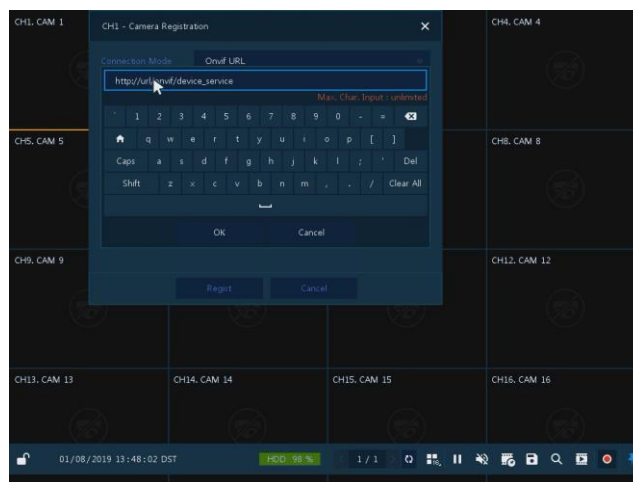


Fig 4

- Once Device IP address is entered Click on Test (Fig 5)
- If Details are correct "Connected" will be displayed (Fig 6)

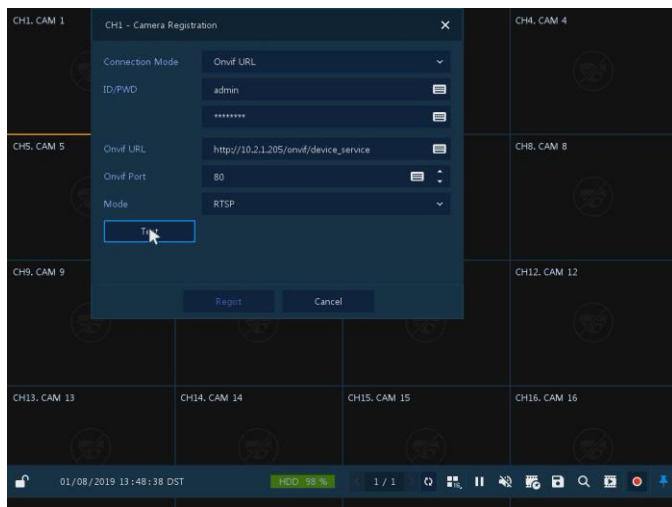


Fig 5

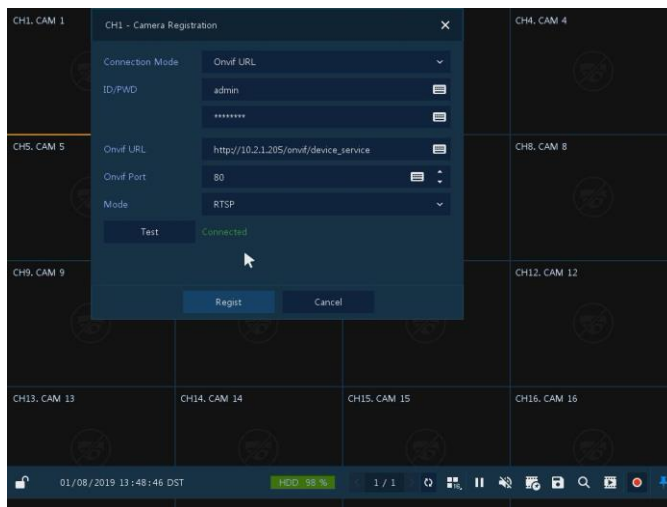


Fig 6

- Once details have been entered select [Regist] (Fig 7)
- Streams will be added and displayed if correct details are entered (Fig 8)

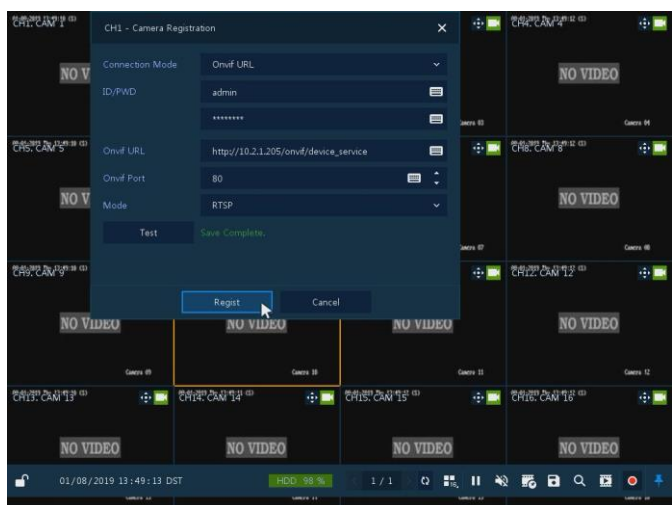


Fig 7

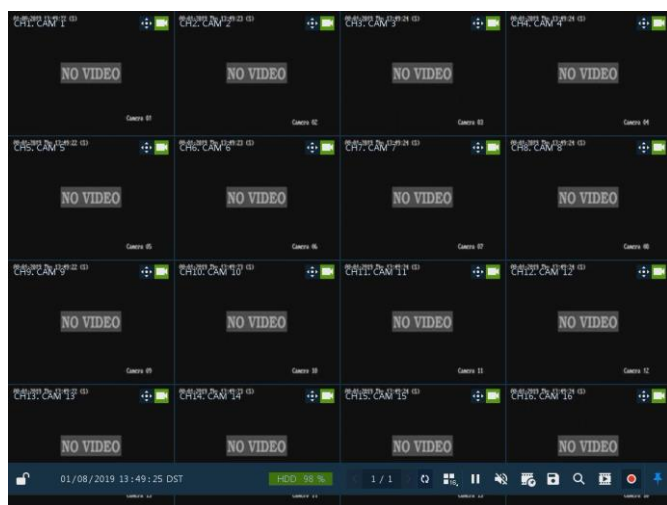


Fig 8

This completes the procedure.