



# VIPER: How to Add VISTA IP Cameras to a HDAL - HDA Hybrid DVR



## INTRODUCTION

The following Procedure explains how to add Vista VK2 IP Cameras to a VIPER HDAL and VIPER HDA DVRs.

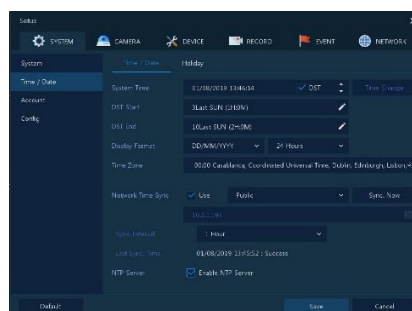
*Note.*

*The VIPER HDAL or VIPER HDA have been switched to Hybrid mode. See separate "How to guide"*

*DVR IP Address is set to 192.168.0.8 & IP Camera Addresses have been set to 192.168.0.11 [IP Cam1] 192.168.0.12 [IP Cam2] etc*

*It is important to make sure the Time & Date are the same as the VIPER Unit. See separate "How to guide"*

*All guides are available here <https://vistacctv.freshdesk.com/support/home>*



## Method

- Right click on screen with mouse, Menu appears then left click **[Log In]** enter admins user and password to login (Fig 1)
  - If "Easy Installation" runs, cancel by clicking on 'X' top right to continue with this procedure.
- Right click in live screen select **[Camera Registration]** (Fig 2)

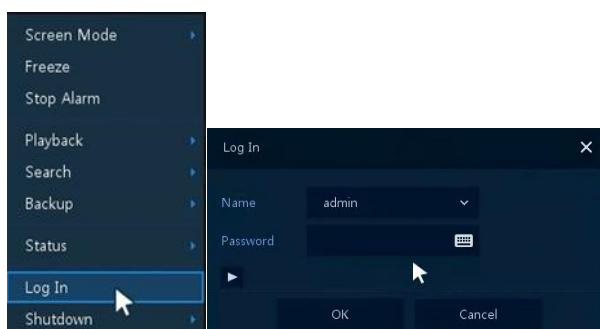


Fig 1

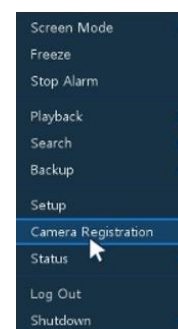


Fig 2

- List of cameras discovered is displayed (Fig 3)
- **[Assign]** Ch number i.e. CH15 (Fig 4)
- Click on camera (Fig 5) then enter Username and Password of camera you are adding

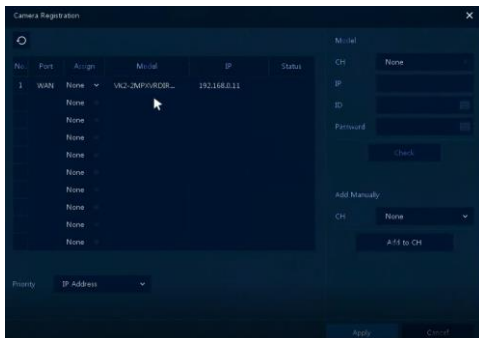


Fig 3

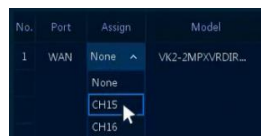


Fig 4

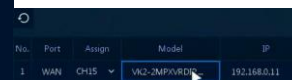


Fig 5

- Click on **[Check]** if details are correct 'Connected' will be displayed bottom left (Fig 6)
- Click **[Apply]**

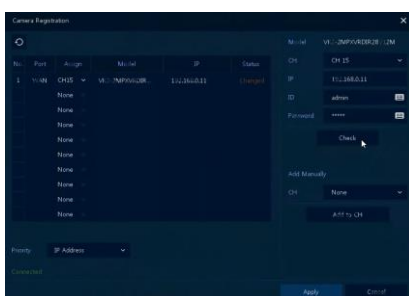


Fig 6

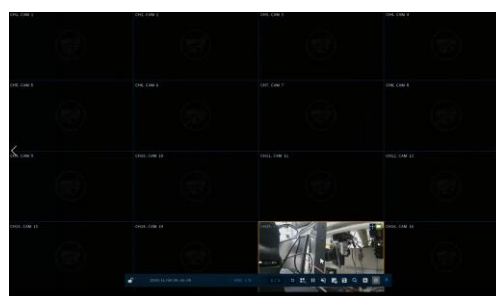


Fig 7

- Camera will be added and displayed if correct details are entered (Fig 7)
- When IP Cameras are added to a DVR they are always assigned to the "Highest Channels"
  - 4 way = Ch 4
  - 8 way = Ch's 7 and 8
  - 16 way = Ch's 13 to 16 or 15 and 16 dependent on Mode selected

Please see separate guide for configuring Motion Recording. <https://vistacctv.freshdesk.com/support/home>

This completes the procedure.