



Viper – Add Optio Cameras with non-admin Passwords on PoE Ports



INTRODUCTION

Viper's PoE camera ports (not WAN) are optimised to automate installation of Vista's matching VK2-IP cameras via simple "plug & play". The "automated" setup assumes a default ID and password of admin/admin being used by the camera. When adding an Optio cameras, that do not use this default ID and password, Viper's autologin feature must first be turned off!

Failure to disable autologin – before plugging the Optio cameras into a Viper PoE port – may result in the camera's ID becoming "locked-out" for a period and necessitate the camera being rebooted.

Follow the procedure below to turn off the Viper autologin feature on individual ports before first plugging in an Optio camera.

PROCEDURE

Prerequisites:

- An already configured and working Viper setup.
- Laptop PC set to DHCP, with up to date Java– to configure Viper via its Web page
- Optio camera – ensure it is factory defaulted first!
- Optio IPconfig software installed on laptop

Follow below procedure;

- Login to the Viper NVR locally using the mouse and local monitor.
- Right-click the mouse while in **Live** view and click **[Login]** – enter the Admin ID and password
- Now select **[Setup]**, then click **[Network]** and click the **[PoE Port]** tab (fig1.)
- Confirm your Vipers PoE IP address – default = 192.168.30.1 (fig 1.)



Fig 1

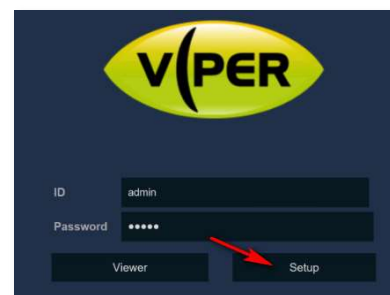


Fig 2

- Plug in your laptop to the highest numbered spare PoE port on the NVR, to allow access to the Viper NVR web page, and boot it up.

- Open Internet Explorer to access Viper web page; enter url <http://x.x.x.x> where x.x.x.x is PoE port address confirmed earlier.
- At login prompt; enter the Admin ID and password, then click **[Setup]** (fig 2.)
- Click menu option **[Camera]** then **[IP Camera Registration]** as in fig 3.
- First change the [Auto Connection] mode of the PoE port that the laptop is connected, to [OFF], click save and reboot laptop.
- Check rear of Viper to determine the next free PoE port where you will plug-in the Optio camera – **DO NOT PLUG IT IN YET!**
- Reconnect to web interface of browser.
- Now refer to fig 3. and check the **logical Channel** number on your NVR that corresponds to the next free **physical PoE port number** you determined above (our example uses **PoE** and **Channel 3**) – hopefully BOTH are free (fig 3 channel 3 is the first free channel)! If not, consider the next available **PoE** and corresponding **Channel** that are both free!

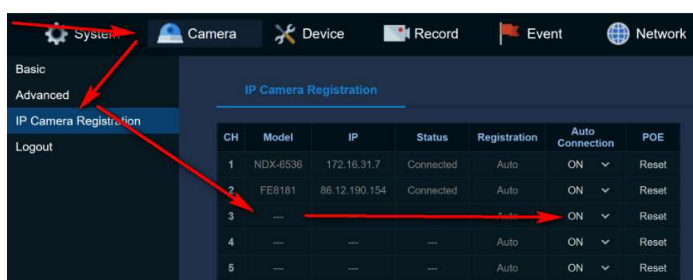


Fig 3

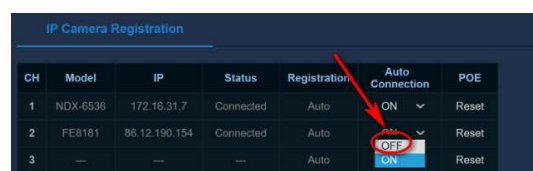


Fig 4

- Once your next free **PoE port** and corresponding **Channel** number have been determined (3 in our example) click the down arrow under the [Auto Connection] column for the port and set to **OFF** (fig 4)
- Click **[Save]**
- Now plug your new Optio camera, into the PoE port you determined earlier. Allow time to boot-up. (approx. 90 seconds)
- Open the Optio IPconfig software on your laptop.
- In [search setting] tick boxes for both “current segment search” & “other segment search” (fig 5)

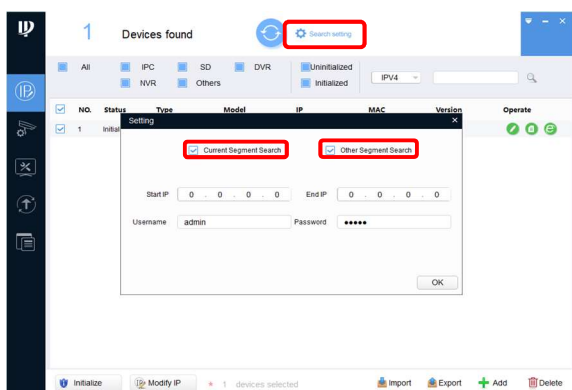


Fig 5

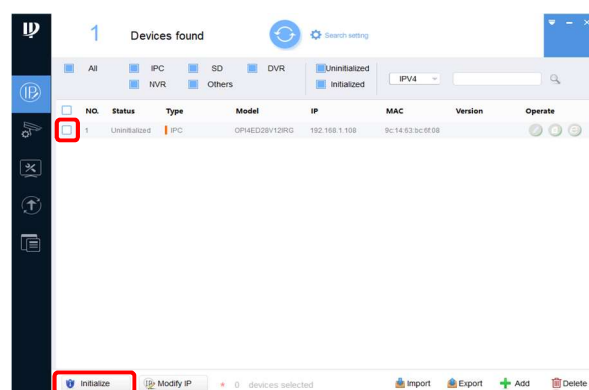


Fig 6

- Initialise the camera (fig 6) and set an admin password (fig 7).

- o An email address can be set for password reset; this is optional untick if not required (fig 7).
- o It is recommended both "Easy4IP" & "Auto-check for updates" are unticked (fig 8).

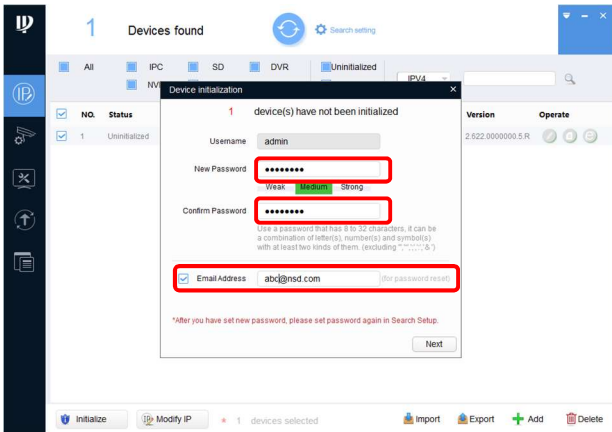


Fig 7

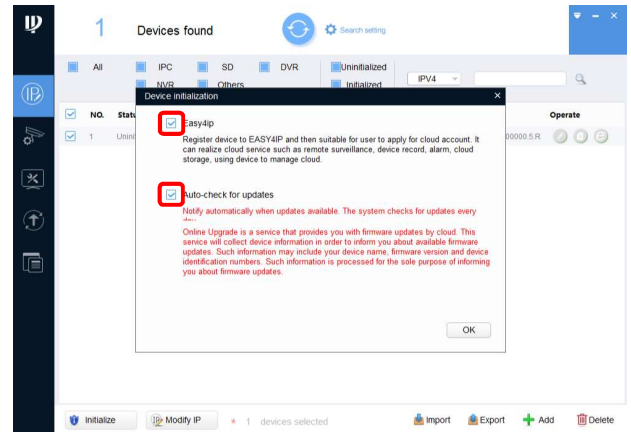


Fig 8

- o Update [search setting] with the password used to initialise the camera (fig 9).

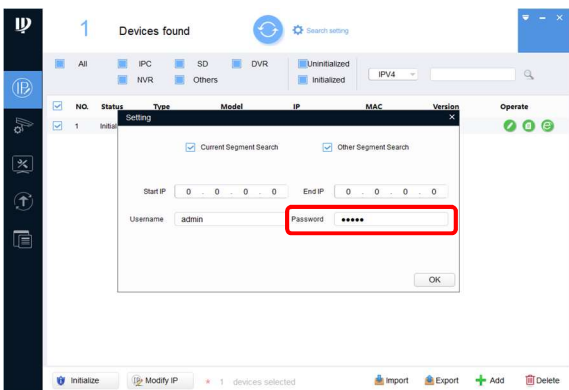



Fig 9

- o To allocate a static IP address first click  (fig 10) then set the IP address within the range of the PoE switch.
- o For this example -192.168.30.XXX (it would be logical to use the next available address 192.168.30.2 -> 192.168.30.17).
- o Set the gateway as the IP address of the PoE switch (fig 10) For this example – 192.168.30.1
- o Select OK the camera will reboot and a green tick will be displayed if the changes were implemented (fig 11).

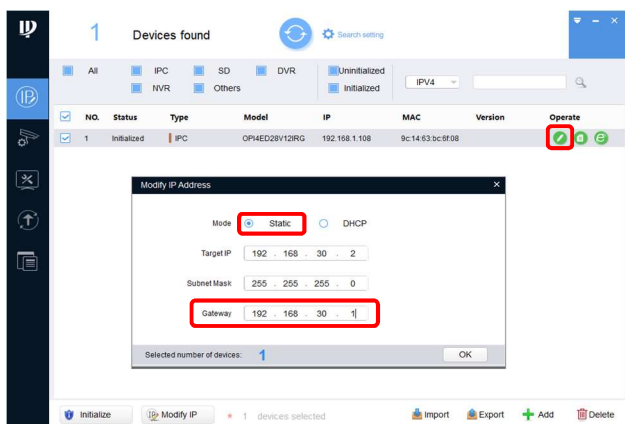


Fig 10

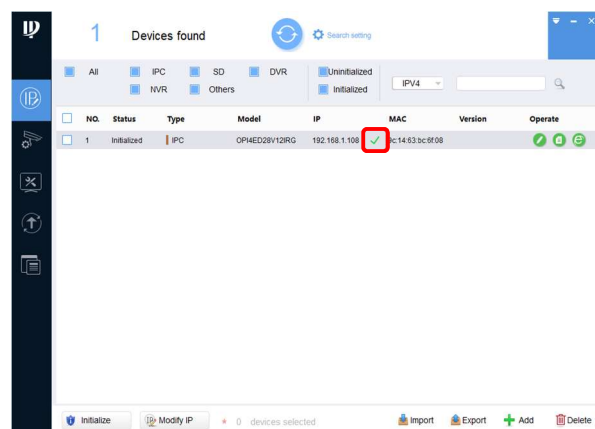


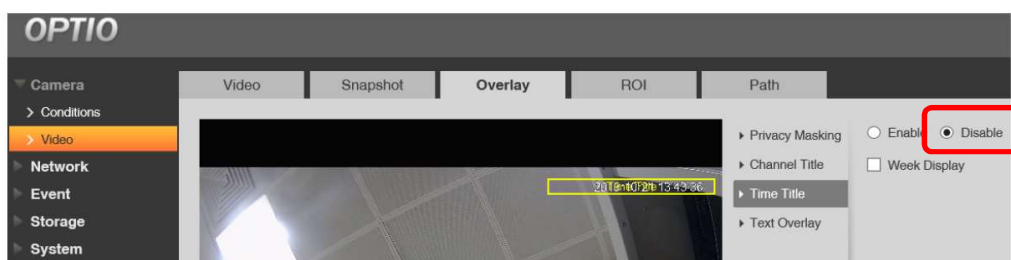
Fig 11

At this point we would recommend adjusting the following settings within the camera's web page:

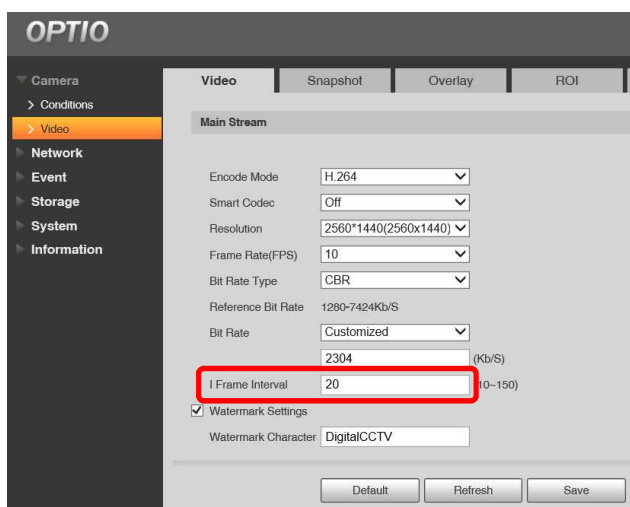


To enter the web page of the camera, click on the following icon:

- Disable the cameras Time and Date OSD.

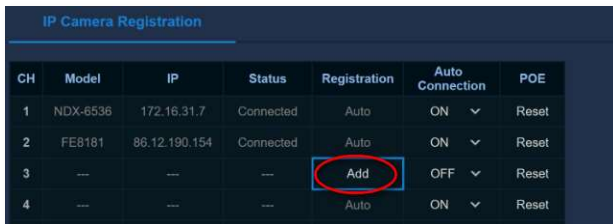


- Set the video stream settings in the camera (The settings below are for illustration)



- An I-Frame interval lower than 20 is required for use with VIPER.
- The Optio cameras will automatically adjust the I-Frame value alongside the FPS, this value can be overwritten.

- Return to Internet Explorer on your laptop and the web page for the Viper NVR
- Go to the IP registration as per fig 3.
- Under the **[Registration]** column for the camera Channel number, click **[Add]** (fig 12).
- Next click [Manual Add] (fig 13).



CH	Model	IP	Status	Registration	Auto Connection	POE
1	NDX-6536	172.16.31.7	Connected	Auto	ON	Reset
2	FE8181	86.12.190.154	Connected	Auto	ON	Reset
3	---	---	---	Add	OFF	Reset
4	---	---	---	Auto	ON	Reset

Fig 12



IP Camera Registration (CH 03)

Manual Add [Search]

Model IP MAC Status

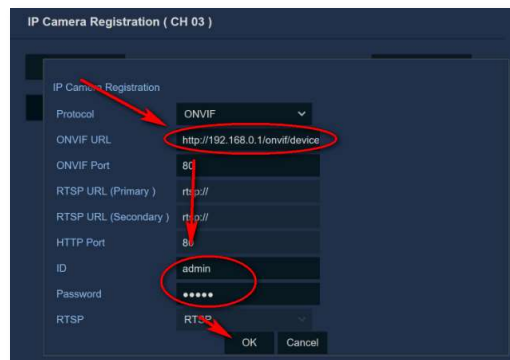
[Previous]

Fig 13

- Change the IP address within the URL (fig 14) to the IP address that was set in the Optio IPconfig software (eg 192.168.30.2).
- The full URL should match the following example - http://192.168.30.2/onvif/device_service.

Note: The above url is correct for Optio cameras! If your 3rd party camera uses an alternative ONVIF url then you will need to determine what the url is and enter this instead!

- Next amend the ID and password that you set on the camera earlier (fig 14).



IP Camera Registration (CH 03)

IP Camera Registration

Protocol: ONVIF

ONVIF URL: <http://192.168.0.1/onvif/device>

ONVIF Port: 80

RTSP URL (Primary): rtsp://

RTSP URL (Secondary): rtsp://

HTTP Port: 80

ID: admin

Password: *****

RTSP: RTSP

[OK] [Cancel]

Fig 14

- Click **[OK]**
- After a short while the camera should report "Connected"
- Click **[Save]** and confirm the camera streams at the NVR locally via Live view.
- View the camera in 9-way view as well as 1-way to confirm both high and low-res streams are being "pulled"
- Allow 5-minutes then confirm playback and recording.

This completes the procedure