

# VK2: How to add Hikvision Thermal Cameras to VK2-4KXDecoder

## INTRODUCTION

The following Procedure explains how to add HikVision Thermal Camera Streams manually via RTSP to the Decoder {this method can also be used with the VIPER NVRs}

These units have 2x Dedicated cameras "Optical & Thermal" the Optical camera is discovered via "ONVIF" but the Thermal camera needs to be added via "RTSP"

See these related articles ["How to add ONVIF Stream"](#) ["Enable ONVIF on HikVision Cameras"](#)

*Note.*

*The procedure assumes you have already enabled "ONVIF Protocol" RTSP stream URL for Thermal Camera*

*`rtsp://IPADDRESS:554/Streaming/Channels/201?transportmode=unicast&profile=Profile_201`*

*`rtsp://IPADDRESS:554/Streaming/Channels/202?transportmode=unicast&profile=Profile_202`*

## Method

- Right click on screen with mouse, Menu appears then left click [Log In] enter user and password to login (Fig 1)
- Using the Mouse move the cursor to the centre of a free channel
- Left click on [Add to Ch] (Fig 2)

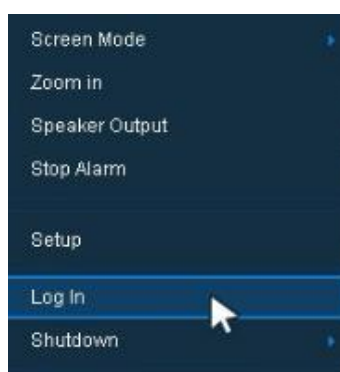


Fig 1

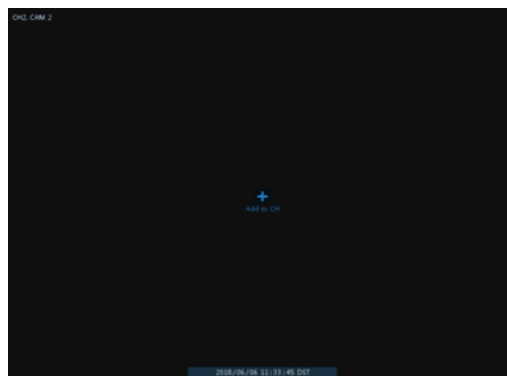


Fig 2

- Camera Registration Menu will appear (Fig 3)
- Select Connection Mode and change to RTSP URL
- Enter Username and Password of camera device you are adding
- Enter the RTSP URL for Primary and Secondary Streams {if device only supports single stream enter Primary only}
- If no secondary stream is available, no image will be displayed on layouts above 4way}
- Enter Port {default is 554 for RTSP} if this has been changed on device change to required port (Fig 4)

Fig 3

Fig 4

- Once details have been entered select [Register] (Fig 5)
- Streams will be added and displayed if correct details are entered (Fig 6)

Fig 5

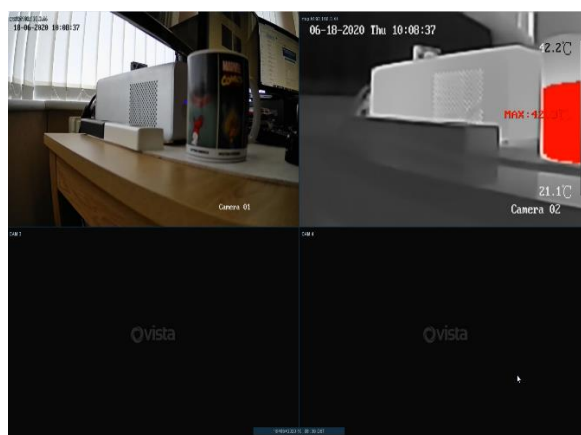


Fig 6

This completes the procedure.