



How to add devices to VIPER-Central

VISTA
KNOWLEDGE
BASE

INTRODUCTION

This procedure describes how to add devices to VIPER-Central management software. These can be VIPER DVRs and NVRs, Vista Decoders and Encoders and VK2 Cameras.

Prerequisites.

PC or Laptop with VIPER-Central Software installed. Devices and PC need to be connected to the same network via a "Ethernet Switch" or Devices have an external Public IP Address.

"VIPER-Central" Management software (available on CD that comes with Cameras and Viper range of products or downloadable via www.vista-cctv.com)

Method

- On the PC / Laptop start **[VIPER-Central software application]** (Start > All programs > VIPER-Central > VIPER-Central). The main window will display with "Login Box" (Fig 1)
- Login into the software with "Admin" User credentials {These details are set up when the software is installed on the PC} Admin User is required to add devices user groups authority etc
- Next go to "VIPER Central Icon" top left and click. Options will be displayed (Fig 2)

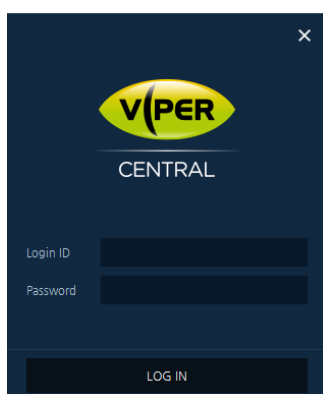


Fig 1

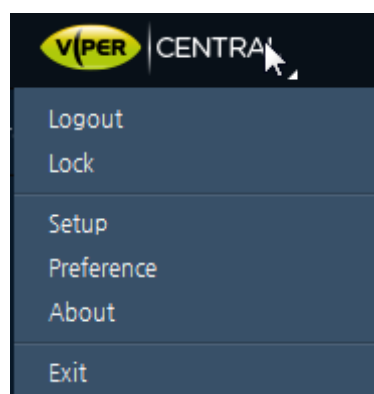
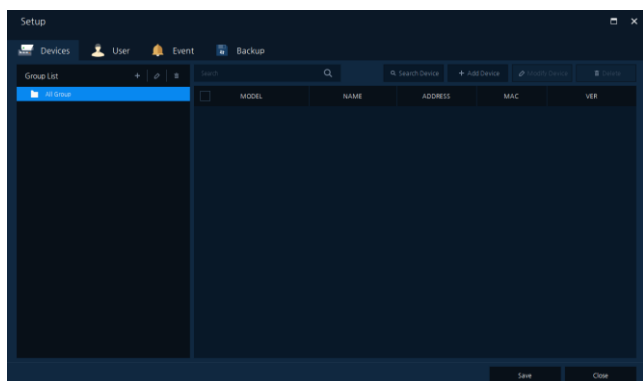


Fig 2

- Select [Setup] Device list will be displayed, here you can "Discover and Manually add Devices" (Fig 3)
- Click on "Search Device" all devices on the local network will be discovered (Fig 4)
- Next click on the Devices you wish to add to the system, then Click "Add Device"



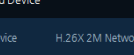
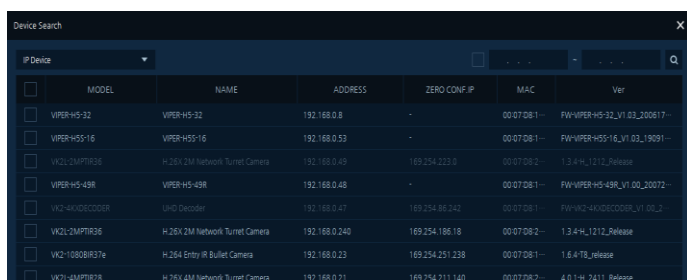
Device Search

IP Device	MODEL	NAME	ADDRESS	ZERO CONF IP	MAC	Ver
<input type="checkbox"/>	Viper-H5-32	Viper-H5-32	192.168.0.8	-	00:07:08:1-	FW-Viper-H5-32_V1.03_200617
<input type="checkbox"/>	Viper-H55-16	Viper-H55-16	192.168.0.53	-	00:07:08:1-	FW-Viper-H55-16_V1.03_19691-
<input type="checkbox"/>	WZL2-4MPTR36	H.26X 2M Network Turmet Camera	192.168.0.49	169.254.223.0	00:07:08:2-	1.3.4-H_1212_Release
<input type="checkbox"/>	Viper-H5-43R	Viper-H5-43R	192.168.0.48	-	00:07:08:1-	FW-Viper-H5-43R_V1.00_20072-
<input type="checkbox"/>	WZ-4X40ECC00R	UHD Decoder	192.168.0.47	169.254.86.242	00:07:08:1-	FW-WZ-4X40ECC00R_V1.00_2-
<input type="checkbox"/>	WZL2-4MPTR36	H.26X 2M Network Turmet Camera	192.168.0.240	169.254.186.18	00:07:08:2-	1.3.4-H_1212_Release
<input type="checkbox"/>	H2-1080B817e	H.264 Entry IP Bullet Camera	192.168.0.23	169.254.251.238	00:07:08:1-	1.6.4_Tb_release
<input type="checkbox"/>	WZL2-4MPTR32	H.26X 4M Network Turmet Camera	192.168.0.21	169.254.211.140	00:07:08:2-	4.0.1-H_2411_Release

Add Device

Close

- Device / Devices will be added to the system automatically using default credentials (they will be a lighter colour to show they have been added) (Fig 5)
- If the default credentials have been changed a login box will be displayed were you can enter updated details. (Fig 6)

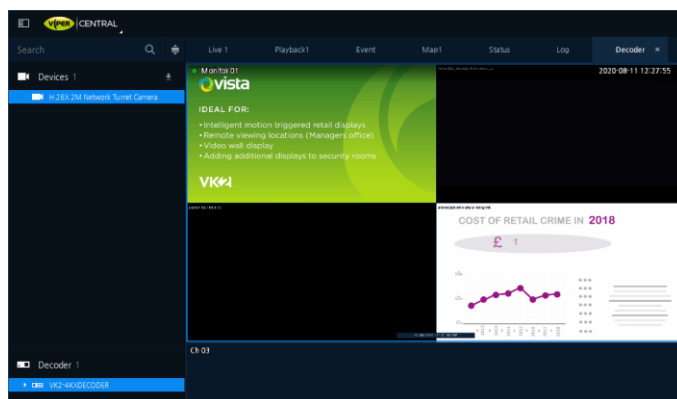


Add Device [X]

Device	H.26X 2M Network Turret Camera
IP Address	192.168.0.240, 169.254.186.18
MAC	00:07:D8:2F:4B:60
Login ID	<input type="text"/>
Password	<input type="password"/>

[OK] [Cancel]

- Next click “Close” Devices you have added will be shown then click “Save” “Save Complete” message displayed.
- Click “Close” “Do you want to Apply the Current Configuration?” message displayed click “Yes”
- Set up menus will close, Main Display window is shown, Devices will appear in device tree from here you can view images etc from VK2 cameras, VIPER DVR/NVR Range and the Encoders – Decoders.



This completes the procedure.