

## INTRODUCTION

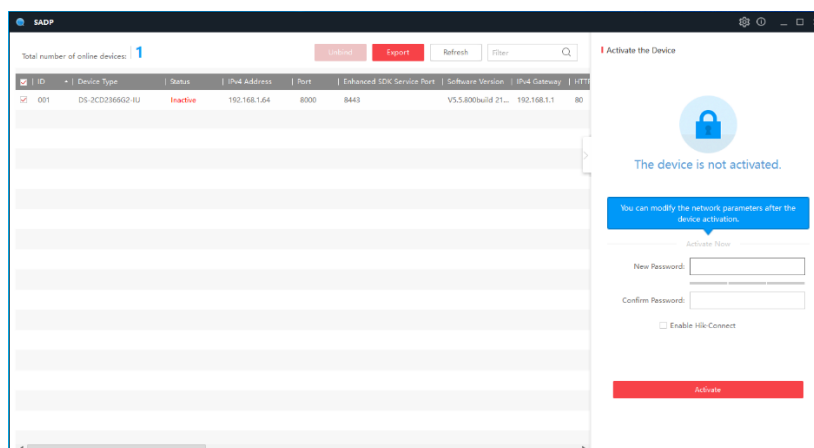
This procedure will describe how to connect a HIK IP camera to a Vista VL-NVR

## Procedure

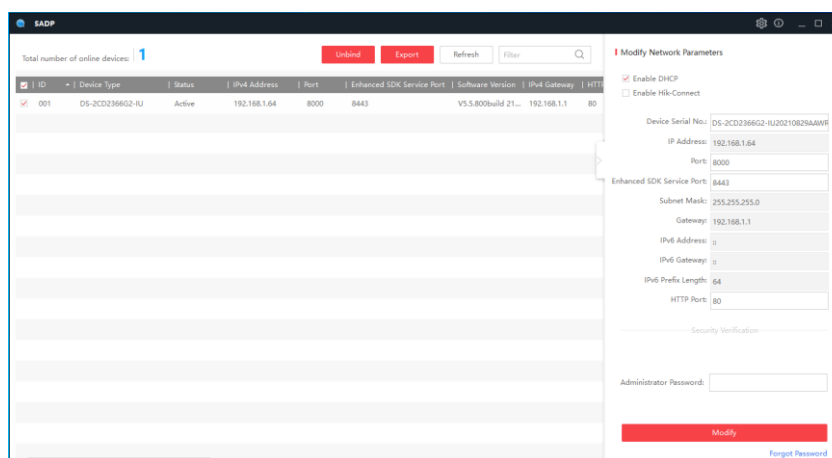
If you do not have the password or IP address of the HIK camera, use the SADP tool IP utility to default or carry out any set up of passwords or IP addresses.

Some HIK cameras will require a hard reset to remove forgotten password.

Use the HIK utility SADP to connect to the HIK camera



Set a username and password



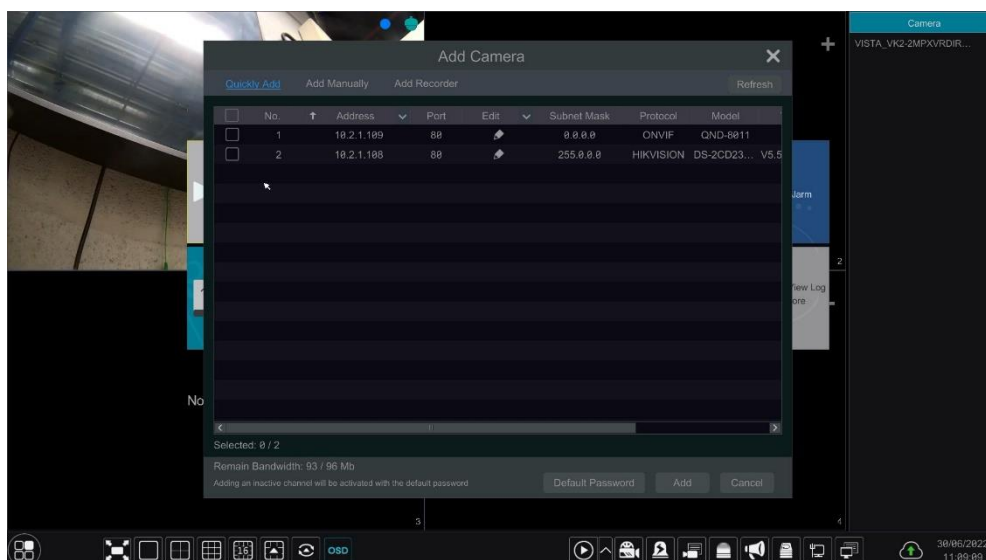
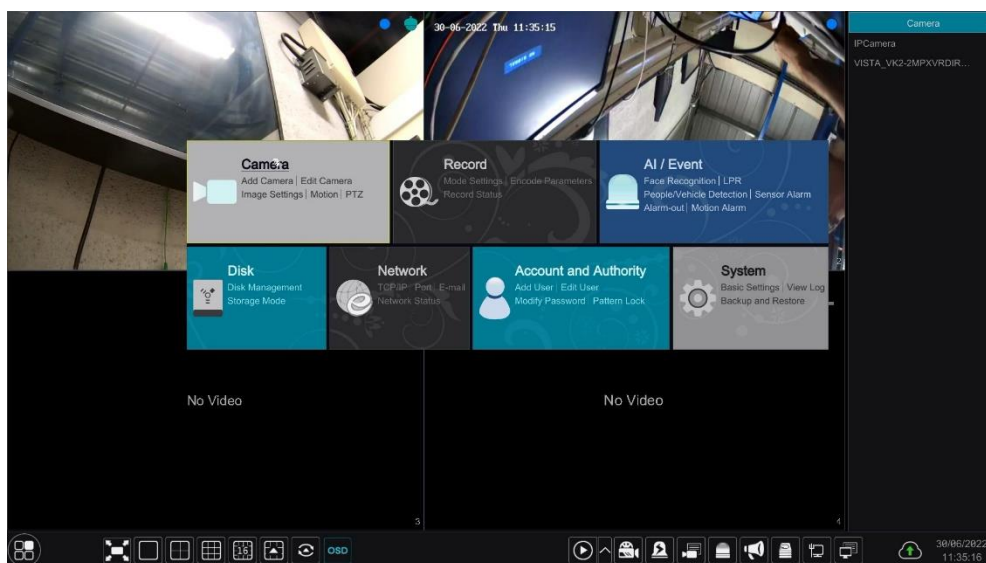


trusted security  
solutions

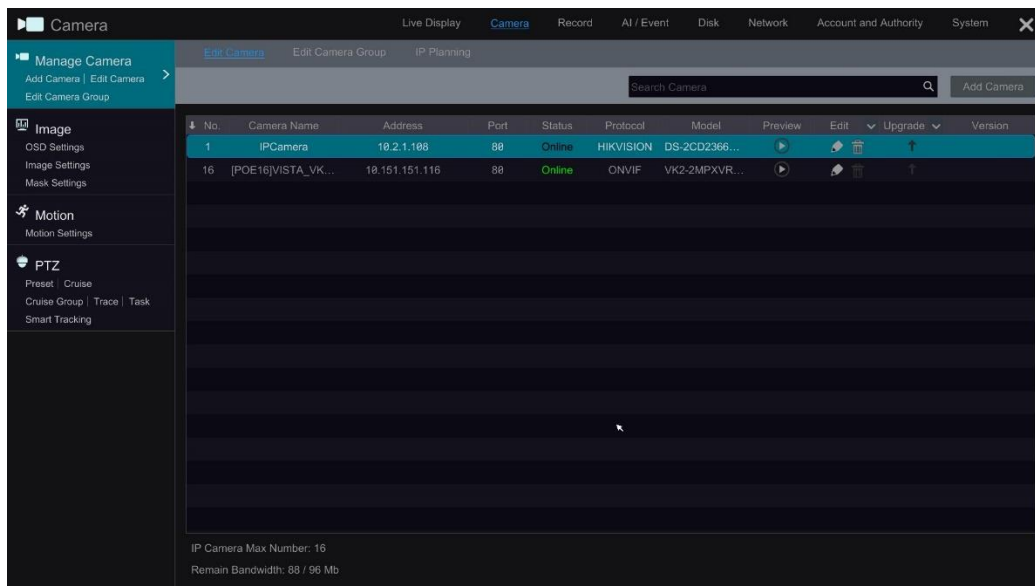
If you are connecting the camera via the PoE port set the camera to DHCP, if using LAN port set a suitable IP address. Save and exit

Connect camera to the VL-NVR either via the Lan port or a PoE port depending on the IP set up

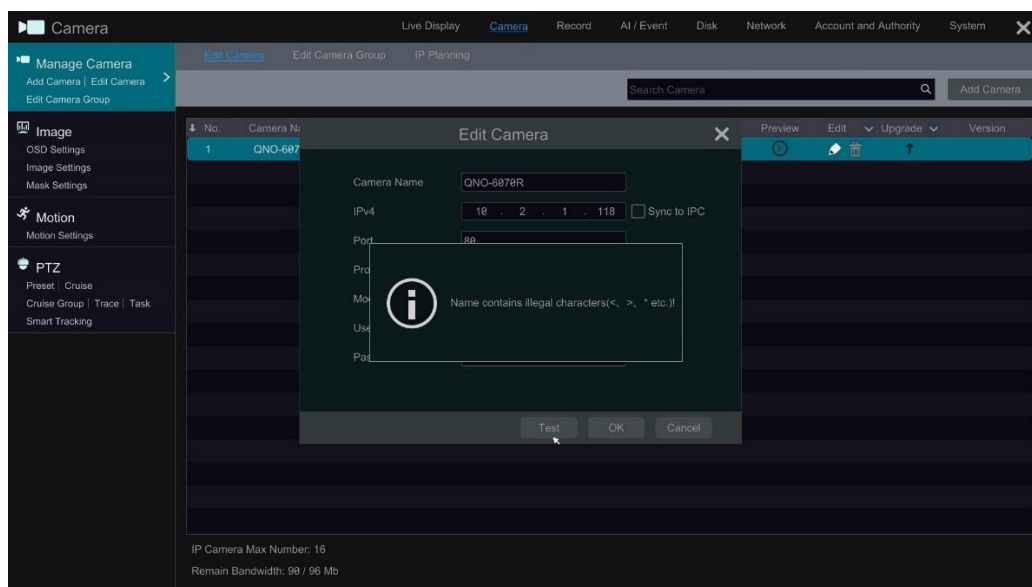
Log in to the menu of the VL-NVR > Setting > Camera > Add camera



## Camera found showing offline

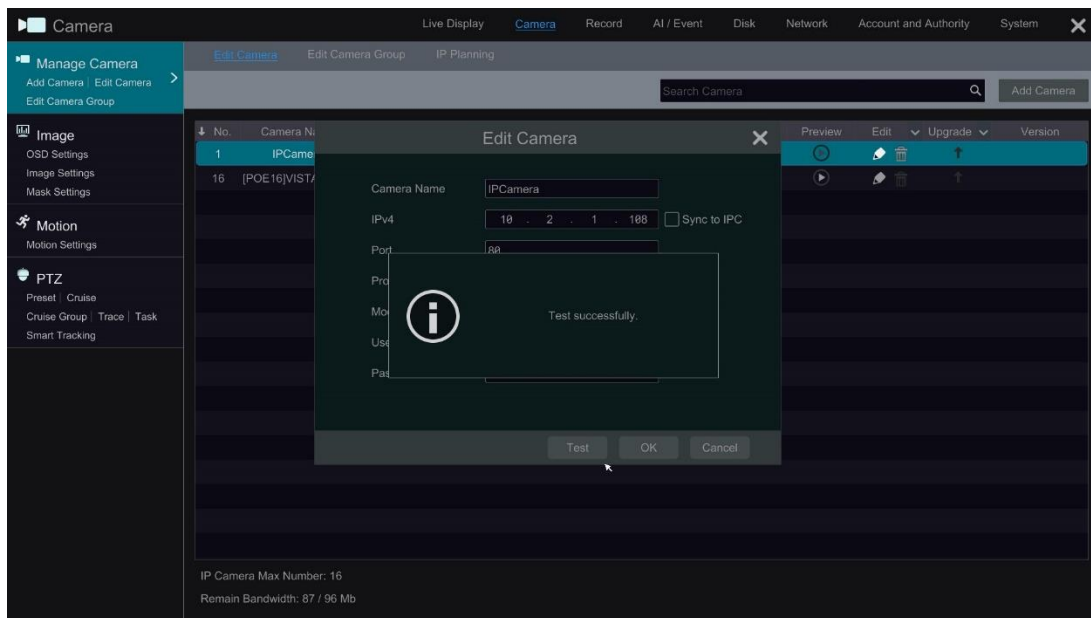


Select the edit option input password and test. If the camera name contains special characters i.e. - ! " £ \$ % etc you will get this message. **"Name contains illegal characters < , . > \* etc"**  
Change the camera name by removing the illegal characters and test again



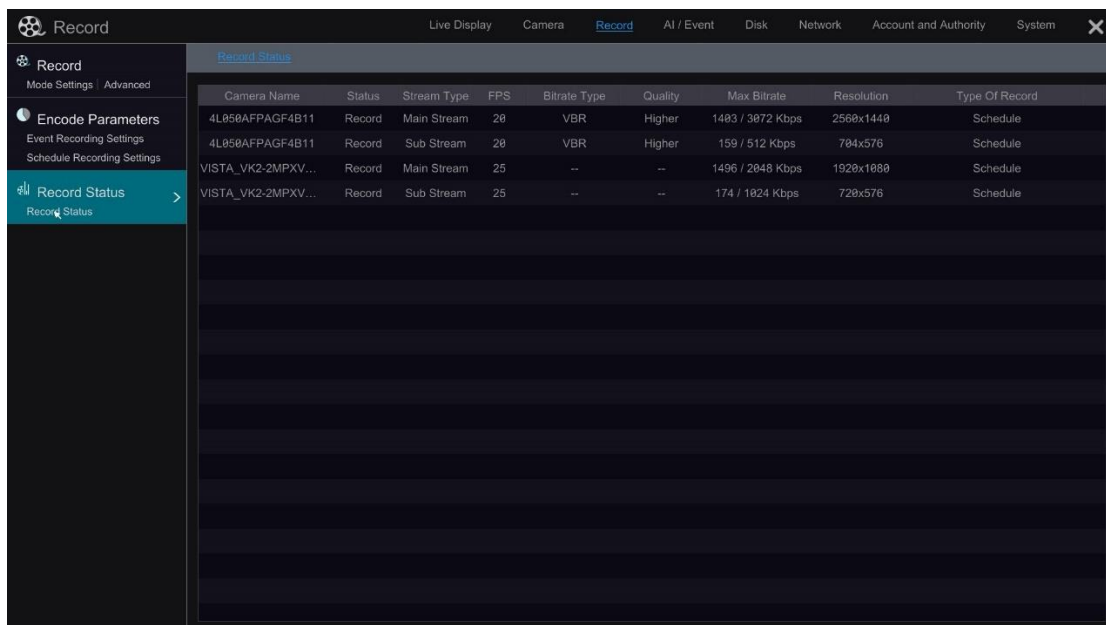


trusted security  
solutions



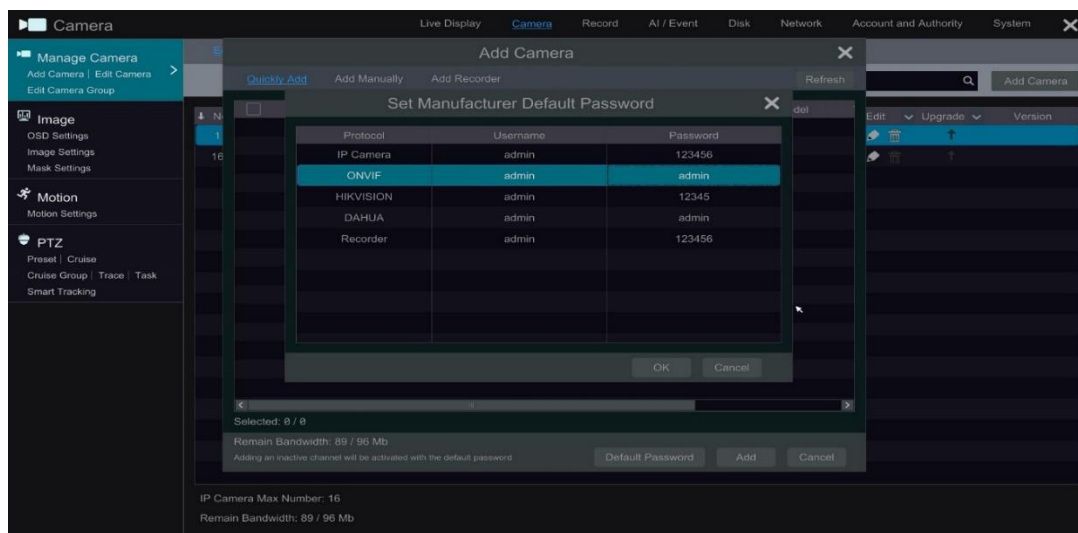
Live images will now be displayed

Camera stream settings can be checked in this menu, set up recording as required

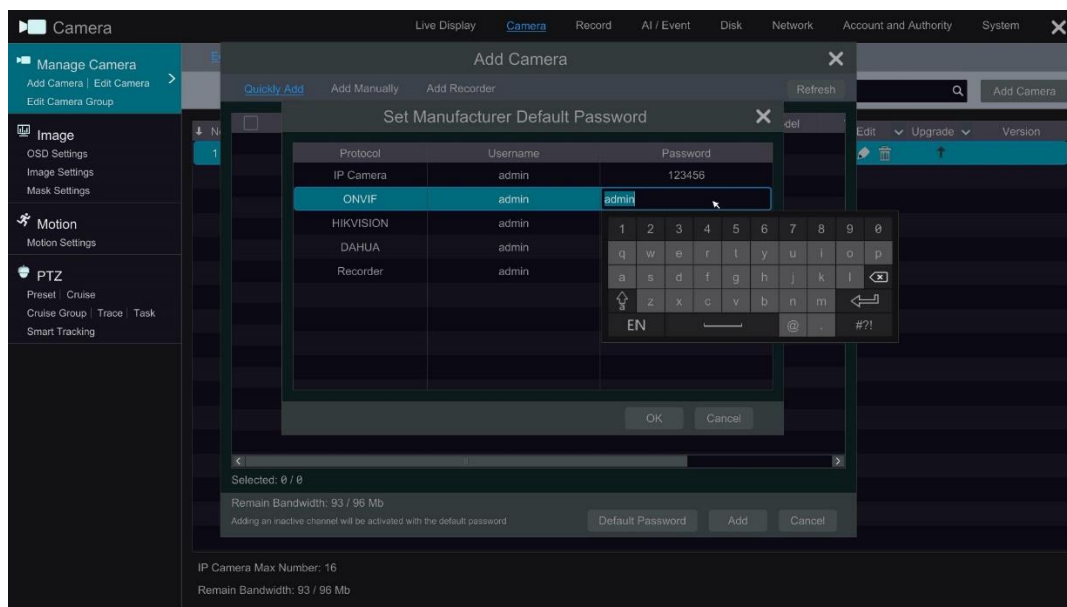


**\*\*Footnote\*\***

If adding multiple cameras to the VL-NVR that don't have the preconfigured password shown below



You can edit the passwords of the Protocol options \* Protocol type is fixed\*



**Example**

You are adding 16 Onvif IP cameras with a password of Onvif123, change the Onvif password to Onvif123, this will allow the VL-NVR to find the cameras on a camera search ready to add.

This concludes the procedure