

### INTRODUCTION

The following Procedure explains how to add VK2 Cameras with "Secure by Default" firmware to a VIPER NVR with "Non-Secure by Default" firmware.


**Note.**

You will require a PC or Laptop with "Smart Manager Discovery Tool installed and PoE switch to initially activate the camera. The procedure assumes you are using the Plug & Play method via PoE ports on the NVR, camera is in Default condition.

To get full functionality we advise to upgrade the NVR to latest FW [Lens features are not fully supported when using non-secure firmware] Secure by Default firmware for Cameras and Vipers is available here [vista-cctv.com/support/](http://vista-cctv.com/support/)

### Activate Camera [Initial set up]

With the "Secure by Default" firmware you must activate the camera before you can add to the existing NVR that does not have "Secure by Default" firmware, this must be done via the web interface of the camera.

- Run 'Smart Manager'  this will discover the camera and give you its IP Address (Fig 1)
- Right 'click' on the camera and select 'Open Web Page' camera web interface will open default browser (IE Chrome or Firefox)
- Web Interface Activation 'Change administrator password' will be displayed. (Fig 2)

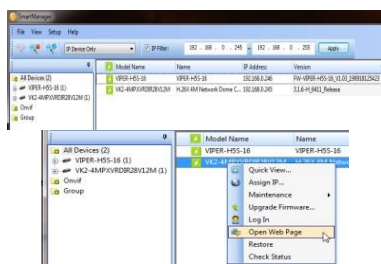


Fig 1

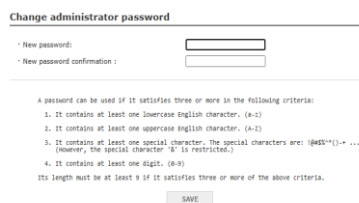


Fig 2



Fig 3

- You must change the password to a secure one to activate the camera.
- A password can be used if it satisfies three or more in the following criteria:
  - It contains at least one lowercase English character. (a-z)
  - It contains at least one uppercase English character. (A-Z)
  - It contains at least one special character. The special characters are: !@#\$%^&\*()-+ [However, the special character '&' is restricted]
  - It contains at least one digit. (0-9)
- Its length must be at least 9 if it satisfies three or more of the above criteria.
- Once this is done click 'Save' to accept password change you can continue with the initial set up of the Camera (Fig 3)

## Adding Cameras [PoE]

Plug the activated camera in to the first available PoE port, the NVR will try to add the camera using the admin/admin credentials, this will not work on cameras with “Secure by Default” firmware. You will need to follow the steps below.

- Connect camera to 1<sup>st</sup> available PoE port wait a couple of minutes for the camera to powered up
- Right ‘click’ on screen “Login” to NVR if required, then go-to ‘Camera Registration’ (Fig 5)
- Select camera > Select Chan [PoE port camera is connected] > enter “Username and Password” then select ‘Check’ if details are correct ‘Connected’ will be shown bottom left (Fig 6)
- Click ‘Apply’ message box appears saying “Camera Channel is Changed Do you want to Continue?” Click ‘OK’
- Once added the camera image will appear (Fig 7)

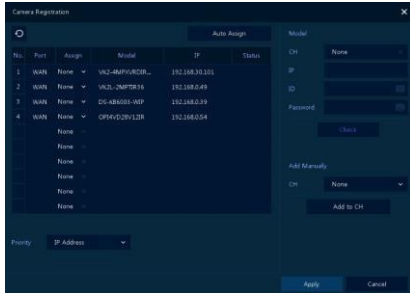


Fig 5

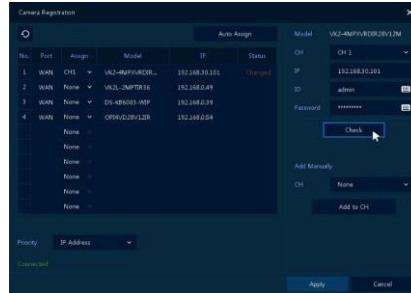


Fig 6

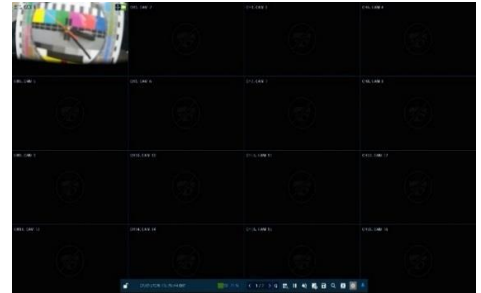


Fig 7

## Adding Cameras [WAN]

See “How to guide” [How to add Vista IP cameras to Viper NVR's](#)

This completes the procedure.