



PRODUCT ACTIVATION

VK2 IP Camera Range Passwords (firmware March 2024 onwards)

As part of new Product Security and IOT standards, later firmware for the Vista VK2 range of IP cameras no longer provides a default admin password. Instead, simply follow this guide to activate each VK2 IP camera on first bootup and enter your own strong password for security.

Additionally, the later firmware now defaults to HTTPS only for secure web browser access!

Until successfully activated, the VK2 camera will:

- Not allow plug and play connectivity when adding to Vista Viper NVRs.
- Not be accessible via ONVIF from third-party NVRs.
- Not stream video over Ethernet.

Note: not all NVRs, including Vista legacy ranges, support the HTTPS protocol for ONVIF. In such installations, please refer to later in this guide to change the VK2 camera to HTTP after activation!

HTTPS Port No.	HTTP Port no.
443	80

Camera Models and Firmware Versions

Camera and password activation has been introduced from the below firmware versions.

VK2-2MPXBIR28V12	VK2-2MPXBIR28V12s	v4.0.7_H_5213_Release 2024.03.01
VK2-2MPXVFD28V12	VK2-2MPXVRDIR37	
VK2-2MPXVRDIR28V12M	VK2-2MPXVRDIR6V22M	
VK2-4MPXBIR28V12M	VK2-4MPXBIR28V12Ms	v3.4.6_H_6411_Release 2024.03.01
VK2-4MPXVFDIR28V12M	VK2-4MPXVRDIR28V12M	
VK2-HDX20-SMW		v1.5.4-PTZ_H_5229_Release 2024.03.01
VK2-HDX23IR-SMW		v2.8.3-PTZ_H_5213_Release 2024.03.01

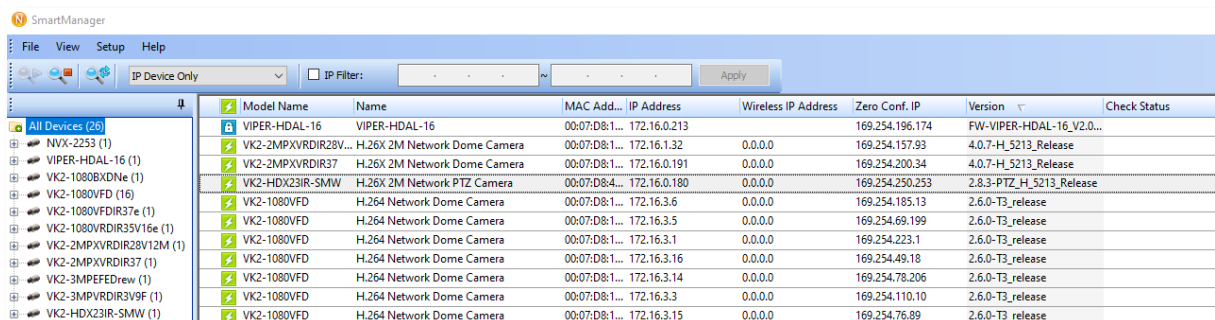
Activation and Password Setting

First, download Vista's VK2 Smart Manager software, **minimum version 2.3.3.31**, to your PC to help discover and manage multiple VK2 cameras.

DOWNLOAD

- Visit url www.vista-cctv.com.
- Click navigation bar and links **Support > Downloads > Vista IP**
- Click folders **[VK2_IP Range] > [VK2_Software] > [_Smart Manager]**
- Click and download the latest version of the .zip file, unzip and install.

1. With all your required VK2 cameras connected to the network and powered up, connect the laptop with VK2 Smart Manager to the same network and open the application.
2. The below screen will be shown with all VK2 cameras on your Ethernet segment.



Model Name	Name	MAC Add...	IP Address	Wireless IP Address	Zero Conf. IP	Version	Check Status
VIPER-HDAL-16	VIPER-HDAL-16	00:07:D8:1...	172.16.0.213		169.254.196.174	FW-VIPER-HDAL-16_V2.0...	
VK2-2MPXVRDIR28V...	H.26X 2M Network Dome Camera	00:07:D8:1...	172.16.1.32	0.0.0.0	169.254.157.93	4.0.7-H_5213_Release	
VK2-2MPXVRDIR37	H.26X 2M Network Dome Camera	00:07:D8:1...	172.16.0.191	0.0.0.0	169.254.200.34	4.0.7-H_5213_Release	
VK2-HDX23IR-SMW	H.26X 2M Network PTZ Camera	00:07:D8:4...	172.16.0.180	0.0.0.0	169.254.250.253	2.8.3-PTZ_H_5213_Release	
VK2-1080VFD	H.264 Network Dome Camera	00:07:D8:1...	172.16.3.6	0.0.0.0	169.254.185.13	2.6.0-T3_release	
VK2-1080VFD	H.264 Network Dome Camera	00:07:D8:1...	172.16.3.5	0.0.0.0	169.254.69.199	2.6.0-T3_release	
VK2-1080VFD	H.264 Network Dome Camera	00:07:D8:1...	172.16.3.1	0.0.0.0	169.254.223.1	2.6.0-T3_release	
VK2-1080VFD	H.264 Network Dome Camera	00:07:D8:1...	172.16.3.16	0.0.0.0	169.254.49.18	2.6.0-T3_release	
VK2-1080VFD	H.264 Network Dome Camera	00:07:D8:1...	172.16.3.14	0.0.0.0	169.254.78.206	2.6.0-T3_release	
VK2-1080VFD	H.264 Network Dome Camera	00:07:D8:1...	172.16.3.3	0.0.0.0	169.254.110.10	2.6.0-T3_release	
VK2-1080VFD	H.264 Network Dome Camera	00:07:D8:1...	172.16.3.15	0.0.0.0	169.254.76.89	2.6.0-T3_release	

3. Double-click on the first camera to be activated, the below screen will appear.



Change administrator password

• New password:

• New password confirmation:

A password can be used if it satisfies three or more in the following criteria:

1. It contains at least one lowercase English character. (a-z)
2. It contains at least one uppercase English character. (A-Z)
3. It contains at least one special character. The special characters are: !@#\$%^&*()-+ ... (However, the special character '&' is restricted.)
4. It contains at least one digit. (0-9)

Its length must be at least 9 if it satisfies three or more of the above criteria.

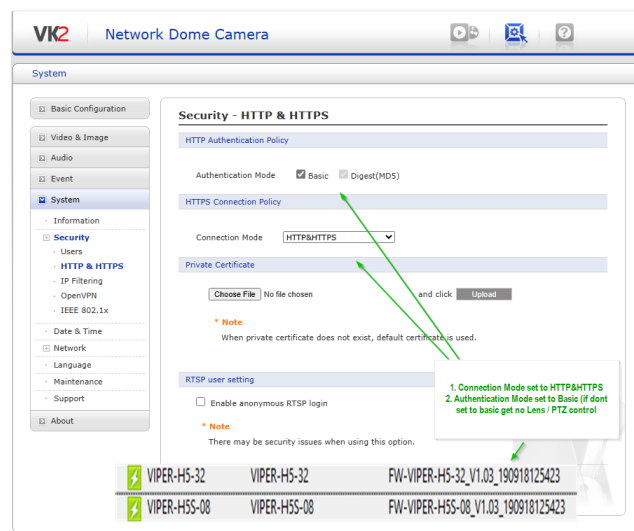
4. Enter your required STRONG password to activate and then **[SAVE]**.

5. Repeat until all required cameras are activated.
6. Now add the cameras to your required NVR using **admin** as the ID and the strong password you set.

NOTE: If your NVR does not support ONVIF over HTTPS, you may not be able to add the VK2 cameras or gain successful PTZ control. If so, first set the VK2 cameras to use HTTP instead. Refer below.

Set VK2 Cameras to HTTP Instead of HTTPS

7. Using VK2 Smart Manager again, double-click each camera (in turn) you wish to change to HTTP.
8. Login to the HTTPS web page.
9. Click menus **[System] > [Security] > [HTTP & HTTPS]** and set as below.
 - Authentication Mode = Basic (refer to compatibility table over the page)
 - Connection mode = HTTP&HTTPS



10. Click **[Save]**.
11. Add the camera to the NVR again and fully test.

This completes the procedure.

See over the page for details of VK2 and Vista NVR support.

VK2 Camera and NVR HTTPS/HTTP Compatibility

NVR	HTTPS	HTTP&HTTPS	Authentication	Port No.	Note
Viper H5 (post 2024 firmware)		✓	Basic or Digest	80	Full video & PTZ support
	✓			443	Full video & PTZ support
Viper H5 (pre 2024 firmware)		✓	Basic only	80	Full video & PTZ support
	✗			443	Not supported
Viper NDAA NH5S-16		✓	Basic only	80 or 443	Full video & PTZ support
	✓		Basic or Digest	443	Full video & PTZ support
VIP-NVR		✓		80	Full video & PTZ support
	✗				Not Supported
VL-NVR		✓		80	Full video & PTZ support
	✗				Not Supported
NX Witness v5.1.2.37996		✓		80	Full video & PTZ support
	✓			443	Full video & PTZ support
SmartDisc		✓	Basic only	80	Full video & PTZ support
	✗				Not supported